



Florida Indoor Tennis Light Fixture Submittal - Exterior

Jan 14 2025



Prepared By

Pete Miller - CBMC Lighting Solutions

317-626-1590

pmiller@cbmcinc.com

5855 Kopetsky Drive, Suite G

Indianapolis, IN 46217, USA



Florida Indoor Tennis Light Fixture Submittal - Exterior

Table of Contents

Datasheets

Type	Manufacturer	Model Number	Pg.
SL4	LSI LIGHTING SOLUTIONS PLUS	MRS-LED-18L-SIL-FT-UNV-DIM-40-70CRI-IMSBT2-BLK-IL	1
SL5	LSI LIGHTING SOLUTIONS PLUS	MRS-LED-18L-SIL-5W-UNV-DIM-40-70CRI-IMSBT2-BLK	5
W1	LSI LIGHTING SOLUTIONS PLUS	XWM-FT-LED-12L-40-UE-BLK-IMSBT1	11
W2	LSI LIGHTING SOLUTIONS PLUS	XWS-LED-3L-FTW-UNV-DIM-40-80CRI-IMBST1L-BLK-BB	16
W3	LSI LIGHTING SOLUTIONS PLUS	MRS-LED-21L-SIL-FT-UNV-DIM-40-70CRI-IMSBTL1-BLK-BKS-XBO-WM-BLK	20



Job Name : Florida Indoor Tennis
Manufacturer : LSI LIGHTING SOLUTIONS PLUS
Model Number : MRS-LED-18L-SIL-FT-UNV-DIM-40-70CRI-IMSBT2-BLK-IL

Type :
SL4



Catalog # : _____ Project : _____
Prepared By : _____ Date : _____

Mirada Small Area (MRS)

Outdoor LED Area Light



IP66 IK08



OVERVIEW	
Lumen Package	6,000 - 30,000
Wattage Range	39 - 209
Efficacy Range (LPW)	112 - 163
Weight lbs(kg)	20 (9.1)
Control Options	IMSBT, ALB, ALS, 7-Pin, PCI

QUICK LINKS

[Ordering Guide](#)[Performance](#)[Photometrics](#)[Dimensions](#)

FEATURES & SPECIFICATIONS

Construction

- Rugged die-cast aluminum housing contains factory prewired driver and optical unit. Cast aluminum wiring access door located underneath.
- Fixtures are finished with LSI's DuraGrip[®] polyester powder coat finishing process. The DuraGrip finish withstands extreme weather changes without cracking or peeling. Other standard LSI finishes available. Consult factory.
- Shipping weight: 27 lbs in carton.

Optical System

- State-of-the-Art one piece silicone optic sheet delivers industry leading optical control with an integrated gasket to provide IP66 rated seal.
- Proprietary silicone refractor optics provide exceptional coverage and uniformity in distribution types 2, 3, 4, 5W, FT, and LC/RC.
- Silicone optical material does not yellow or crack with age and provides a typical light transmittance of 93-95%.
- Zero uplight.
- Available in 5000K, 4000K, and 3000K color temperatures per ANSI C78.377
- Minimum CRI of 70.
- Integral louver (IL) and integral half louver (IH) options available for enhanced backlight control.

Electrical

- High-performance driver features over-voltage, under-voltage, short-circuit and over temperature protection.

- 0-10V dimming (10% - 100%) standard.
- Standard Universal Voltage (120-277 VAC) Input 50/60 Hz or optional High Voltage (347-480 VAC).
- L70 Calculated Life: >60k Hours
- Total harmonic distortion: <20%
- Operating temperature: -40°C to +50°C (-40°F to +122°F). 30L lumen packages rated to +40°C.
- Power factor: >.90
- Input power stays constant over life.
- Field replaceable 10kV surge protection device meets a minimum Category C Low operation (per ANSI/IEEE C62.41.2).
- High-efficacy LEDs mounted to metal-core circuit board to maximize heat dissipation
- Driver is fully encased in potting material for moisture resistance and complies with FCC standards. Driver and key electronic components can easily be accessed.

Controls

- Optional integral passive infrared Bluetooth[™] motion and photocell sensor. Fixtures operate independently and can be commissioned via iOS or Android configuration app.
- LSI's AirLink[™] wireless control system options reduce energy and maintenance costs while optimizing light quality 24/7.

Installation

- Designed to mount to square or round poles.
- A single fastener secures the hinged door,

underneath the housing and provides quick & easy access to the electrical compartment.

- Included terminal block accepts up to 12 ga. wire.
- Utilizes LSI's traditional B3 drill pattern.

Warranty

- LSI luminaires carry a 5-year limited warranty. Refer to <https://www.lsicorp.com/resources/terms-conditions-warranty/> for more information.

Listings

- Listed to UL 1598 and UL 8750.
- Meets Buy American Act requirements.
- Dark Sky compliant; with 3000K color temperature selection.
- Title 24 Compliant; see local ordinance for qualification information.
- RoHS compliant
- Suitable for wet locations.
- IP66 rated Luminaire per IEC 60598-1.
- 3G rated for ANSI C136.31 high vibration applications are qualified.
- IK08 rated luminaire per IEC 66262 mechanical impact code
- DesignLights Consortium[®] (DLC) qualified product. Not all versions of this product may be DLC qualified. Please check the DLC Qualified Products List at www.designlights.org/QPL to confirm which versions are qualified.



LSI Industries Inc. 10000 Alliance Rd. Cincinnati, OH 45242 • (513) 372-3200 • www.lsicorp.com
LSI Industries Inc. All Rights Reserved. Specifications and dimensions subject to industry standard tolerances. Specifications subject to change without notice.

Page 1/10 Rev. 07/24/24
SPEC.1046.B.1122

P&Z

Prepared By: CBMC Lighting Solutions | <https://cbmcinc.com/>

Pete Miller | pmiller@cbmcinc.com

PZ23-12000009
January 14, 2025
03/05/2025



Job Name : Florida Indoor Tennis
Manufacturer : LSI LIGHTING SOLUTIONS PLUS
Model Number : MRS-LED-18L-SIL-FT-UNV-DIM-40-70CRI-IMSBT2-BLK-IL

Type :
SL4

Mirada Small Area Light (MRS)

Have questions? Call us at (800) 436-7800

Type: _____

ORDERING GUIDE

[Back to Quick Links](#)

TYPICAL ORDER EXAMPLE: MRS LED 18L SIL FT UNV DIM 40 70CRI ALBCS1 BLK IH							
Prefix	Light Source	Lumen Package	Lens	Distribution	Orientation ²	Voltage	Driver
MRS - Mirada Small Area Light	LED	6L - 6,000 lms, 39W 9L - 9,000 lms, 63W 12L - 12,000 lms, 86W 15L - 15,000 lms, 111W 18L - 18,000 lms, 135W 21L - 21,000 lms, 165W 24L - 24,000 lms, 196W 30L - 30,000 lms, 209W ⁸ Custom Lumen Packages ¹	SIL - Silicone	2 - Type 2 3 - Type 3 4 - Type 4 5W - Type 5 Wide FT - Forward Throw LC - Left Corner RC - Right Corner	(blank) - standard L - Optics rotated left 90° R - Optics rotated right 90°	UNV - Universal Voltage (120-277V) HV - High Voltage (347-480V)	DIM - 0-10V Dimming (0-10%)
Color Temp	Color Rendering	Controls (Choose One)				Finish	Options
50 - 5,000 CCT 40 - 4,000 CCT 30 - 3,000 CCT	70CRI - 70 CRI	(Blank) - None Wireless Controls System ALSC - AirLink Synapse Control System ALSCS2 - AirLink Synapse Control System with 12-20' MH Motion Sensor ⁸ ALSCS4 - AirLink Synapse Control System with 20-40' MH Motion Sensor ⁸ ALBMR1LR - AirLink Blue Long Range Wireless Motion & Photo Sensor Controller (8-15' MH) ^{4,8} ALBMR2LR - AirLink Blue Long Range Wireless Motion & Photo Sensor Controller (16-40' MH) ^{4,8} Stand-Alone Controls EXT - 0-10v Dimming leads extended to housing exterior CR7P - 7 Pin Control Receptacle ANSI C136.41 ³ IMSBTL1 - Integral Bluetooth TM Motion and Photocell Sensor (8-24' MH) ^{4,8} IMSBTL2 - Integral BluetoothTM Motion and Photocell Sensor (25-40' MH)^{4,8}				BLK - Black BRZ - Dark Bronze GMG - Gun Metal Gray GPT - Graphite MSV - Metallic Silver PLP - Platinum Plus SVG - Satin Verde Green WHT - White	(Blank) - None IH - Integral Half Louver (Moderate Spill Light Cutoff) ² IL - Integral Louver (Sharp Spill Light Cutoff) ²



Need more information?
[Click here for our glossary](#)

Have additional questions?
Call us at (800) 436-7800



Accessory Ordering Information⁵

CONTROLS ACCESSORIES	
Description	Order Number
Twist Lock Photocell (120V) for use with CR7P	122514
Twist Lock Photocell (208-277) for use with CR7P	122515
Twist Lock Photocell (347V) for use with CR7P	122516
Twist Lock Photocell (480V) for use with CR7P	1225180
AirLink 5 Pin Twist Lock Controller	661409
AirLink 7 Pin Twist Lock Controller	661410
Shorting Cap for use with CR7P	149328

FUSING OPTIONS ⁷	
Description	Order Number
Single Fusing (120V)	See Fusing Accessory Guide
Single Fusing (277V)	
Double Fusing (208V, 240V)	
Double Fusing (480V)	
Double Fusing (347V)	

EXTERNAL SHIELDING OPTIONS	
3" External Shield	See Shielding Guide
6" External Shield	

1. Custom lumen and wattage packages available, consult factory. Values are within industry standard tolerances but not DLC listed.
2. Not available on "Type 5W" distribution.
3. Control device or shorting cap must be ordered separately. See Accessory Ordering Information.
4. Motion sensors are field configurable via the LSI app that can be downloaded from your smartphone's native app store.
5. Accessories are shipped separately and field installed.
6. "CLR" denotes finish. See Finish options.
7. Fusing must be located in hand hole of pole. See [Fusing Accessory Guide](#) for compatibility.
8. ALSC, ALB, and IMSBT not available with 30L HV.



Job Name : Florida Indoor Tennis
Manufacturer : LSI LIGHTING SOLUTIONS PLUS
Model Number : MRS-LED-18L-SIL-FT-UNV-DIM-40-70CRI-IMSBT2-BLK-IL

Type :
SL4

Mirada Small Area Light (MRS)

Have questions? Call us at (800) 436-7800

Type: _____

PHOTOMETRICS (CONT)

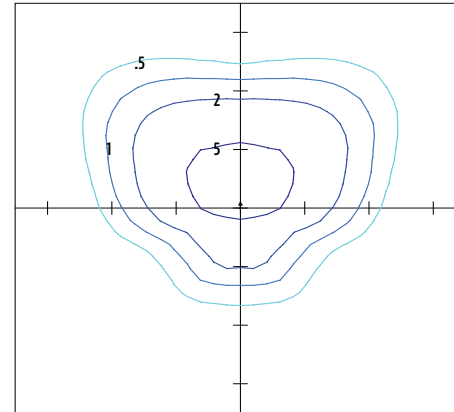
[Back to Quick Links](#)

MRS-LED-18L-SIL-FT-40-70CRI

Luminaire Data	
Type FT Distribution	
Description	4000 Kelvin, 70 CRI
Delivered Lumens	17,682
Watts	135
Efficacy	131
IES Type	Type III - Short
BUG Rating	B3-U0-G2

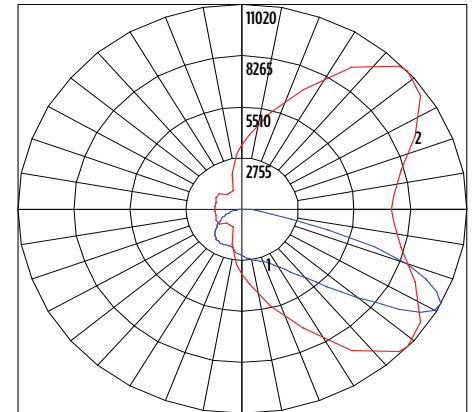
Zonal Lumen Summary		
Zone	Lumens	% Luminaire
Low (0-30)°	2255	13%
Medium (30-60)°	9463	54%
High (60-80)°	5696	32%
Very High (80-90)°	268	2%
Uplight (90-180)°	0	0%
Total Flux	17682	100%

ISO Footcandle



20' Mounting Height / 20' Grid Spacing
 5 FC 2 FC 1 FC 0.5 FC

Polar Curve



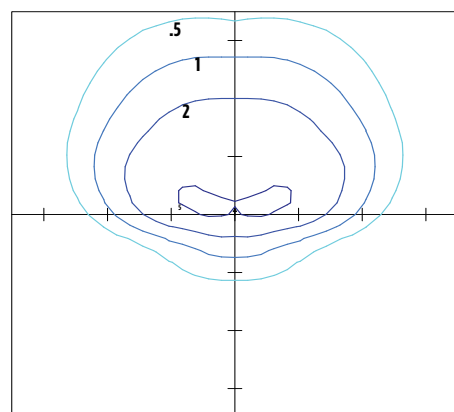
Vertical Plane Horizontal Cone

MRS-LED-18L-SIL-4-40-70CRI

Luminaire Data	
Type 4 Distribution	
Description	4000 Kelvin, 70 CRI
Delivered Lumens	18,149
Watts	135
Efficacy	134
IES Type	Type IV - Very Short
BUG Rating	B3-U0-G4

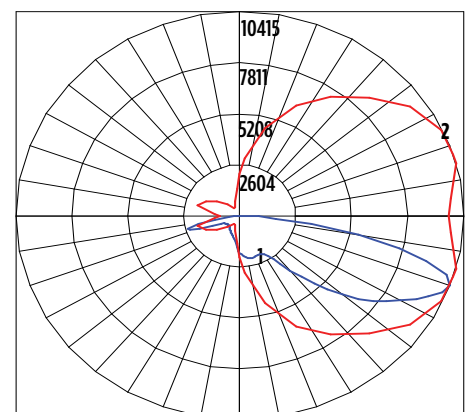
Zonal Lumen Summary		
Zone	Lumens	% Luminaire
Low (0-30)°	1671	9%
Medium (30-60)°	7615	42%
High (60-80)°	8074	44%
Very High (80-90)°	790	4%
Uplight (90-180)°	0	0%
Total Flux	18149	100%

ISO Footcandle



20' Mounting Height / 20' Grid Spacing
 5 FC 2 FC 1 FC 0.5 FC

Polar Curve



Vertical Plane Horizontal Cone



Job Name : Florida Indoor Tennis
Manufacturer : LSI LIGHTING SOLUTIONS PLUS
Model Number : MRS-LED-18L-SIL-FT-UNV-DIM-40-70CRI-IMSBT2-BLK-IL

Type :
SL4

Mirada Small Area Light (MRS)

Have questions? Call us at (800) 436-7800

Type: _____

PHOTOMETRICS (CONT)

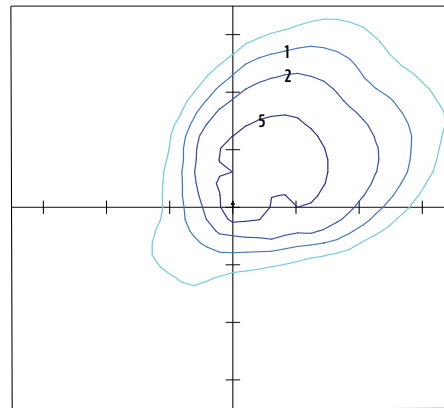
[Back to Quick Links](#)

MRM-LED-30L-SIL-5W-40-70CRI

Luminaire Data	
Right Corner Distribution	
Description	4000 Kelvin, 70 CRI
Delivered Lumens	18,138
Watts	135
Efficacy	134
IES Type	N/A
BUG Rating	B3-U0-G3

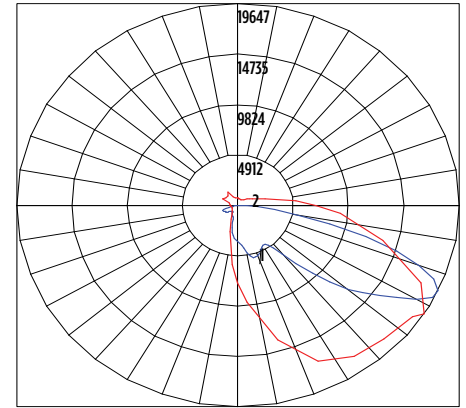
Zonal Lumen Summary		
Zone	Lumens	% Luminaire
Low (0-30°)	2317	13%
Medium (30-60°)	8066	44%
High (60-80°)	7214	40%
Very High (80-90°)	541	3%
Uplight (90-180°)	0	0%
Total Flux	18138	100%

ISO Footcandle



20' Mounting Height / 20' Grid Spacing
■ 5 FC ■ 2 FC ■ 1 FC ■ 0.5 FC

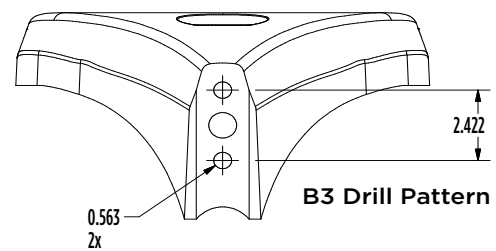
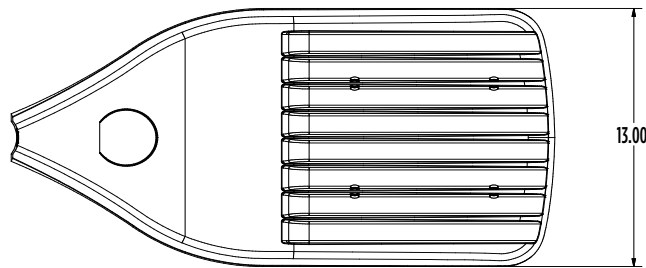
Polar Curve



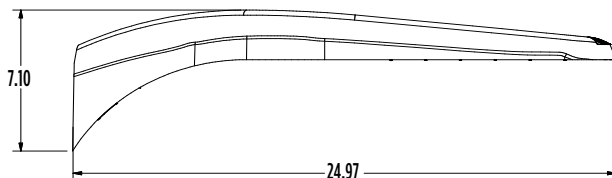
■ Vertical Plane ■ Horizontal Cone

PRODUCT DIMENSIONS

[Back to Quick Links](#)



B3 Drill Pattern



Luminaire EPA Chart					
Tilt Degree		0°	15°	30°	45°
	Single	0.4	0.7	1.1	1.5
	D180°	0.8	1.5	1.9	2.4
	D90°	0.9	1.5	1.9	2.4
	T90°	0.9	1.6	2.1	2.5
	TN120°	0.9	1.9	2.7	3.0
	Q90°	0.9	1.6	2.1	2.5



LSI Industries Inc. 10000 Alliance Rd. Cincinnati, OH 45242 • (513) 372-3200 • www.lsicorp.com
LSI Industries Inc. All Rights Reserved. Specifications and dimensions subject to industry standard tolerances. Specifications subject to change without notice.

Page 9/10 Rev. 07/24/24
SPEC.1046.B.1122

P&Z

Prepared By: CBMC Lighting Solutions | <https://cbmcinc.com/>

Pete Miller | pmiller@cbmcinc.com

PZ23-12000009
January 14, 2025
03/05/2025



Job Name : Florida Indoor Tennis
Manufacturer : LSI LIGHTING SOLUTIONS PLUS
Model Number : MRS-LED-18L-SIL-5W-UNV-DIM-40-70CRI-IMSBT2-BLK

Type :
SL5



Catalog # : _____ Project : _____
Prepared By : _____ Date : _____

Mirada Small Area (MRS)

Outdoor LED Area Light



IP66 IK08



OVERVIEW	
Lumen Package	6,000 - 30,000
Wattage Range	39 - 209
Efficacy Range (LPW)	112 - 163
Weight lbs(kg)	20 (9.1)
Control Options	IMSBT, ALB, ALS, 7-Pin, PCI

QUICK LINKS

[Ordering Guide](#)[Performance](#)[Photometrics](#)[Dimensions](#)

FEATURES & SPECIFICATIONS

Construction

- Rugged die-cast aluminum housing contains factory prewired driver and optical unit. Cast aluminum wiring access door located underneath.
- Fixtures are finished with LSI's DuraGrip[®] polyester powder coat finishing process. The DuraGrip finish withstands extreme weather changes without cracking or peeling. Other standard LSI finishes available. Consult factory.
- Shipping weight: 27 lbs in carton.

Optical System

- State-of-the-Art one piece silicone optic sheet delivers industry leading optical control with an integrated gasket to provide IP66 rated seal.
- Proprietary silicone refractor optics provide exceptional coverage and uniformity in distribution types 2, 3, 4, 5W, FT, and LC/RC.
- Silicone optical material does not yellow or crack with age and provides a typical light transmittance of 93-95%.
- Zero uplight.
- Available in 5000K, 4000K, and 3000K color temperatures per ANSI C78.377
- Minimum CRI of 70.
- Integral louver (IL) and integral half louver (IH) options available for enhanced backlight control.

Electrical

- High-performance driver features over-voltage, under-voltage, short-circuit and over temperature protection.

- 0-10V dimming (10% - 100%) standard.
- Standard Universal Voltage (120-277 VAC) Input 50/60 Hz or optional High Voltage (347-480 VAC).
- L70 Calculated Life: >60k Hours
- Total harmonic distortion: <20%
- Operating temperature: -40°C to +50°C (-40°F to +122°F). 30L lumen packages rated to +40°C.
- Power factor: >.90
- Input power stays constant over life.
- Field replaceable 10kV surge protection device meets a minimum Category C Low operation (per ANSI/IEEE C62.41.2).
- High-efficacy LEDs mounted to metal-core circuit board to maximize heat dissipation
- Driver is fully encased in potting material for moisture resistance and complies with FCC standards. Driver and key electronic components can easily be accessed.

Controls

- Optional integral passive infrared Bluetooth[™] motion and photocell sensor. Fixtures operate independently and can be commissioned via iOS or Android configuration app.
- LSI's AirLink[™] wireless control system options reduce energy and maintenance costs while optimizing light quality 24/7.

Installation

- Designed to mount to square or round poles.
- A single fastener secures the hinged door,

underneath the housing and provides quick & easy access to the electrical compartment.

- Included terminal block accepts up to 12 ga. wire.
- Utilizes LSI's traditional B3 drill pattern.

Warranty

- LSI luminaires carry a 5-year limited warranty. Refer to <https://www.lsicorp.com/resources/terms-conditions-warranty/> for more information.

Listings

- Listed to UL 1598 and UL 8750.
- Meets Buy American Act requirements.
- Dark Sky compliant; with 3000K color temperature selection.
- Title 24 Compliant; see local ordinance for qualification information.
- RoHS compliant
- Suitable for wet locations.
- IP66 rated Luminaire per IEC 60598-1.
- 3G rated for ANSI C136.31 high vibration applications are qualified.
- IK08 rated luminaire per IEC 66262 mechanical impact code
- DesignLights Consortium[®] (DLC) qualified product. Not all versions of this product may be DLC qualified. Please check the DLC Qualified Products List at www.designlights.org/QPL to confirm which versions are qualified.



LSI Industries Inc. 10000 Alliance Rd. Cincinnati, OH 45242 • (513) 372-3200 • www.lsicorp.com
LSI Industries Inc. All Rights Reserved. Specifications and dimensions subject to industry standard tolerances. Specifications subject to change without notice.

Page 1/10 Rev. 07/24/24
SPEC.1046.B.1122

P&Z

Prepared By: CBMC Lighting Solutions | <https://cbmcinc.com/>

Pete Miller | pmiller@cbmcinc.com

PZ23-12000009
January 14, 2025
03/05/2025



Job Name : Florida Indoor Tennis
Manufacturer : LSI LIGHTING SOLUTIONS PLUS
Model Number : MRS-LED-18L-SIL-5W-UNV-DIM-40-70CRI-IMSBT2-BLK

Type :
SL5

Mirada Small Area Light (MRS)

Have questions? Call us at (800) 436-7800

Type: _____

ORDERING GUIDE

[Back to Quick Links](#)

TYPICAL ORDER EXAMPLE: MRS LED 18L SIL FT UNV DIM 40 70CRI ALBCS1 BLK IH							
Prefix	Light Source	Lumen Package	Lens	Distribution	Orientation ²	Voltage	Driver
MRS - Mirada Small Area Light	LED	6L - 6,000 lms, 39W 9L - 9,000 lms, 63W 12L - 12,000 lms, 86W 15L - 15,000 lms, 111W 18L - 18,000 lms, 135W 21L - 21,000 lms, 165W 24L - 24,000 lms, 196W 30L - 30,000 lms, 209W ⁸ Custom Lumen Packages ¹	SIL - Silicone	2 - Type 2 3 - Type 3 4 - Type 4 5W - Type 5 Wide FT - Forward Throw LC - Left Corner RC - Right Corner	(blank) - standard L - Optics rotated left 90° R - Optics rotated right 90°	UNV - Universal Voltage (120-277V) HV - High Voltage (347-480V)	DIM - 0-10V Dimming (0-10%)
Color Temp	Color Rendering	Controls (Choose One)				Finish	Options
50 - 5,000 CCT 40 - 4,000 CCT 30 - 3,000 CCT	70CRI - 70 CRI	(Blank) - None Wireless Controls System ALSC - AirLink Synapse Control System ALSCS2 - AirLink Synapse Control System with 12-20' MH Motion Sensor ⁸ ALSCS4 - AirLink Synapse Control System with 20-40' MH Motion Sensor ⁸ ALBMR1LR - AirLink Blue Long Range Wireless Motion & Photo Sensor Controller (8-15' MH) ^{4,8} ALBMR2LR - AirLink Blue Long Range Wireless Motion & Photo Sensor Controller (16-40' MH) ^{4,8} Stand-Alone Controls EXT - 0-10v Dimming leads extended to housing exterior CR7P - 7 Pin Control Receptacle ANSI C136.41 ³ IMSBT1L - Integral Bluetooth TM Motion and Photocell Sensor (8-24' MH) ^{4,8} IMSBT1L2 - Integral Bluetooth TM Motion and Photocell Sensor (25-40' MH) ^{4,8}				BLK - Black BRZ - Dark Bronze GMG - Gun Metal Gray GPT - Graphite MSV - Metallic Silver PLP - Platinum Plus SVG - Satin Verde Green WHT - White	(Blank) - None IH - Integral Half Louver (Moderate Spill Light Cutoff) ² IL - Integral Louver (Sharp Spill Light Cutoff) ²



Need more information?
[Click here for our glossary](#)

Have additional questions?
Call us at (800) 436-7800



Accessory Ordering Information⁵

CONTROLS ACCESSORIES	
Description	Order Number
Twist Lock Photocell (120V) for use with CR7P	122514
Twist Lock Photocell (208-277) for use with CR7P	122515
Twist Lock Photocell (347V) for use with CR7P	122516
Twist Lock Photocell (480V) for use with CR7P	1225180
AirLink 5 Pin Twist Lock Controller	661409
AirLink 7 Pin Twist Lock Controller	661410
Shorting Cap for use with CR7P	149328

FUSING OPTIONS ⁷	
Description	Order Number
Single Fusing (120V)	See Fusing Accessory Guide
Single Fusing (277V)	
Double Fusing (208V, 240V)	
Double Fusing (480V)	
Double Fusing (347V)	

EXTERNAL SHIELDING OPTIONS	
3" External Shield	See Shielding Guide
6" External Shield	

1. Custom lumen and wattage packages available, consult factory. Values are within industry standard tolerances but not DLC listed.
2. Not available on "Type 5W" distribution.
3. Control device or shorting cap must be ordered separately. See Accessory Ordering Information.
4. Motion sensors are field configurable via the LSI app that can be downloaded from your smartphone's native app store.
5. Accessories are shipped separately and field installed.
6. "CLR" denotes finish. See Finish options.
7. Fusing must be located in hand hole of pole. See [Fusing Accessory Guide](#) for compatibility.
8. ALSC, ALB, and IMSBT not available with 30L HV.



Job Name : Florida Indoor Tennis
Manufacturer : LSI LIGHTING SOLUTIONS PLUS
Model Number : MRS-LED-18L-SIL-5W-UNV-DIM-40-70CRI-IMSBT2-BLK

Type :
SL5

Mirada Small Area Light (MRS)

Type: _____

Have questions? Call us at (800) 436-7800

PERFORMANCE

[Back to Quick Links](#)

DELIVERED LUMENS*												
Lumen Package	Distribution	CRI	3000K CCT			4000K CCT			5000K CCT			Wattage
			Delivered Lumens	Efficacy	BUG Rating	Delivered Lumens	Efficacy	BUG Rating	Delivered Lumens	Efficacy	BUG Rating	
6L	2	70	5918	149	B2-U0-G1	6136	155	B2-U0-G1	6122	155	B2-U0-G1	39
	3		6016	152	B1-U0-G2	6238	158	B1-U0-G2	6224	157	B1-U0-G2	
	4		5967	153	B1-U0-G2	6333	162	B1-U0-G3	6136	157	B1-U0-G2	
	5W		5690	144	B3-U0-G1	5899	149	B3-U0-G1	5886	1479	B3-U0-G1	
	FT		5822	147	B1-U0-G1	6037	152	B1-U0-G1	6023	152	B1-U0-G1	
	LC		6003	154	B1-U0-G2	6371	163	B1-U0-G2	6173	158	B1-U0-G2	
	RC		5964	153	B1-U0-G2	6329	162	B1-U0-G2	6132	157	B1-U0-G2	
9L	2	70	9091	145	B2-U0-G2	9484	152	B2-U0-G2	9462	151	B2-U0-G2	63
	3		9241	148	B2-U0-G2	9641	154	B2-U0-G2	9619	154	B2-U0-G2	
	4		9214	146	B2-U0-G3	9778	155	B2-U0-G3	9474	150	B2-U0-G3	
	5W		8740	140	B3-U0-G2	9118	146	B3-U0-G2	9097	144	B3-U0-G2	
	FT		8943	143	B2-U0-G2	9330	149	B2-U0-G2	9308	149	B2-U0-G2	
	LC		9269	147	B2-U0-G3	9837	156	B2-U0-G3	9531	151	B2-U0-G3	
	RC		9208	146	B2-U0-G2	9772	155	B2-U0-G3	9468	150	B2-U0-G3	
12L	2	70	12132	141	B3-U0-G2	12685	148	B3-U0-G2	12514	146	B3-U0-G2	86
	3		12333	143	B2-U0-G2	12894	150	B2-U0-G2	12721	148	B2-U0-G2	
	4		12277	143	B2-U0-G3	13029	152	B2-U0-G3	12623	147	B2-U0-G3	
	5W		11664	136	B4-U0-G2	12195	142	B4-U0-G2	12031	140	B4-U0-G2	
	FT		11935	139	B2-U0-G2	12479	145	B2-U0-G2	12311	143	B2-U0-G2	
	LC		12351	144	B2-U0-G3	13108	152	B2-U0-G3	12700	148	B2-U0-G3	
	RC		12271	143	B2-U0-G3	13022	151	B2-U0-G3	12617	147	B2-U0-G3	
15L	2	70	14220	128	B3-U0-G2	15167	137	B3-U0-G2	14488	131	B3-U0-G2	111
	3		14938	135	B2-U0-G2	15933	144	B2-U0-G2	15219	137	B2-U0-G2	
	4		14792	133	B2-U0-G4	15698	141	B2-U0-G4	15209	137	B2-U0-G4	
	5W		14304	129	B4-U0-G2	15257	137	B4-U0-G2	14574	131	B4-U0-G2	
	FT		14342	129	B2-U0-G2	15297	138	B2-U0-G2	14612	132	B2-U0-G2	
	LC		14881	134	B2-U0-G3	15793	142	B2-U0-G3	15301	138	B2-U0-G3	
	RC		14784	133	B2-U0-G3	15689	141	B2-U0-G3	15201	137	B2-U0-G3	
18L	2	70	16438	122	B3-U0-G2	17532	130	B3-U0-G3	16747	124	B3-U0-G2	135
	3		17267	128	B3-U0-G3	18417	137	B3-U0-G3	17592	131	B3-U0-G3	
	4		17101	127	B3-U-G4	18149	134	B3-U-G4	17584	130	B3-U-G4	
	5W		16535	123	B4-U0-G2	17636	133	B5-U0-G2	16846	125	B4-U0-G2	
	FT		16578	123	B3-U0-G2	17682	131	B3-U0-G2	16890	125	B3-U0-G2	
	LC		17204	127	B3-U0-G3	18258	135	B3-U0-G3	17689	131	B3-U0-G3	
	RC		17091	127	B2-U0-G3	18138	134	B2-U0-G3	17574	130	B2-U0-G3	
21L	2	70	19488	118	B3-U0-G3	20786	126	B3-U0-G3	19885	120	B3-U0-G3	165
	3		20472	124	B3-U0-G3	21835	132	B3-U0-G3	20857	126	B3-U0-G3	
	4		20279	123	B3-U0-G4	21521	130	B3-U0-G5	20851	126	B3-U0-G5	
	5W		19604	119	B5-U0-G3	20909	126	B5-U0-G3	19973	121	B5-U0-G3	
	FT		19655	119	B3-U0-G3	20964	127	B3-U0-G3	20025	121	B3-U0-G3	
	LC		20401	124	B3-U0-G4	21651	131	B3-U0-G4	20977	127	B3-U0-G4	
	RC		20268	123	B3-U0-G3	21509	130	B3-U0-G4	20840	126	B3-U0-G3	

*LEDs are frequently updated therefore values are nominal.



Job Name : Florida Indoor Tennis
Manufacturer : LSI LIGHTING SOLUTIONS PLUS
Model Number : MRS-LED-18L-SIL-5W-UNV-DIM-40-70CRI-IMSBT2-BLK

Type :
SL5

Mirada Small Area Light (MRS)

Type: _____

Have questions? Call us at (800) 436-7800

PERFORMANCE

[Back to Quick Links](#)

DELIVERED LUMENS*												
Lumen Package	Distribution	CRI	3000K CCT			4000K CCT			5000K CCT			Wattage
			Delivered Lumens	Efficacy	BUG Rating	Delivered Lumens	Efficacy	BUG Rating	Delivered Lumens	Efficacy	BUG Rating	
24L	2	70	21976	112	B3-U0-G3	23439	120	B3-U0-G3	22390	114	B3-U0-G3	196
	3		23085	118	B3-U0-G3	24622	126	B3-U0-G3	23519	120	B3-U0-G3	
	4		23190	117	B3-U0-G5	24758	124	B3-U0-G5	23888	120	B3-U0-G5	
	5W		22105	113	B5-U0-G3	23578	120	B5-U0-G3	22522	115	B5-U0-G3	
	FT		22164	113	B3-U0-G3	23640	121	B3-U0-G3	22581	115	B3-U0-G3	
	LC		23330	117	B3-U0-G4	24907	125	B3-U0-G4	24032	121	B3-U0-G4	
	RC		23117	117	B3-U0-G4	24744	124	B3-U0-G4	23874	120	B3-U0-G4	
30L	2	70	30078	144	B4-U0-G3	29485	143	B4-U0-G4	30697	147	B4-U0-G3	209
	3		31711	154	B3-U0-G3	31086	151	B3-U0-G3	32364	157	B3-U0-G3	
	4		30459	148	B4-U0-G5	29858	145	B4-U0-G5	31085	151	B4-U0-G5	
	5W		30588	149	B5-U0-G3	29985	146	B5-U0-G3	31218	152	B5-U0-G3	
	FT		31585	153	B3-U0-G4	30962	150	B3-U0-G4	32235	156	B4-U0-G4	
	LC		32303	155	B3-U0-G5	31666	152	B3-U0-G5	32968	158	B3-U0-G5	
	RC		31943	153	B3-U0-G4	31313	150	B3-U0-G4	32600	156	B3-U0-G5	

*LEDs are frequently updated therefore values are nominal.

ELECTRICAL DATA (AMPS)*						
Lumens	120V	208V	240V	277V	347V	480V
6L	0.34	0.20	0.17	0.15	0.12	0.09
9L	0.52	0.30	0.26	0.23	0.18	0.13
12L	0.72	0.41	0.36	0.31	0.25	0.18
15L	0.93	0.53	0.46	0.40	0.32	0.23
18L	1.12	0.65	0.56	0.49	0.39	0.28
21L	1.38	0.80	0.69	0.60	0.48	0.34
24L	1.63	0.94	0.82	0.71	0.56	0.41
30L	1.74	1.00	0.87	0.75	0.60	0.43

*Electrical data at 25°C (77°F). Actual wattage may differ by +/-10%

RECOMMENDED LUMEN MAINTENANCE ¹					
Ambient Temp	Lumen Multiplier				
	0 hrs. ²	25K hrs. ²	50K hrs. ²	75K hrs. ³	100K hrs. ³
C	100%	95%	89%	84%	79%
0 C - 25 C	100%	95%	89%	84%	79%
40 C	100%	94%	87%	80%	74%

- Lumen maintenance values at 25°C are calculated per TM-21 based on LM-80 data and in-situ luminaire testing.
- In accordance with IESNA TM-21-11, Projected Values represent interpolated value based on time durations that are within six times (6X) the IESNA LM-80-08 total test duration (in hours) for the device under testing ((DUT) i.e. the packaged LED chip).
- In accordance with IESNA TM-21-11, Calculated Values represent time durations that exceed six times NA LM-80-08 total test duration (in hours) for the device under testing ((DUT) i.e. the packaged LED chip).



Job Name : Florida Indoor Tennis
Manufacturer : LSI LIGHTING SOLUTIONS PLUS
Model Number : MRS-LED-18L-SIL-5W-UNV-DIM-40-70CRI-IMSBT2-BLK

Type :
SL5

Mirada Small Area Light (MRS)

Have questions? Call us at (800) 436-7800

Type: _____

PHOTOMETRICS (CONT)

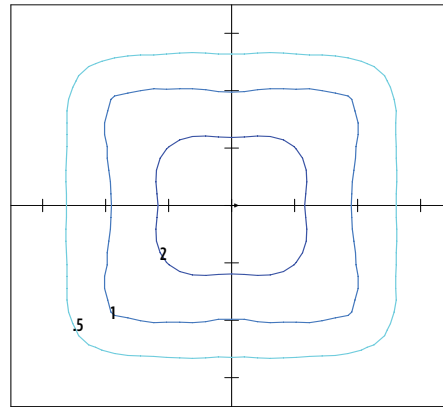
[Back to Quick Links](#)

MRM-LED-30L-SIL-5W-40-70CRI

Luminaire Data	
Type 5W Distribution	
Description	4000 Kelvin, 70 CRI
Delivered Lumens	17,636
Watts	135
Efficacy	131
IES Type	Type VS - Short
BUG Rating	B4-U0-G2

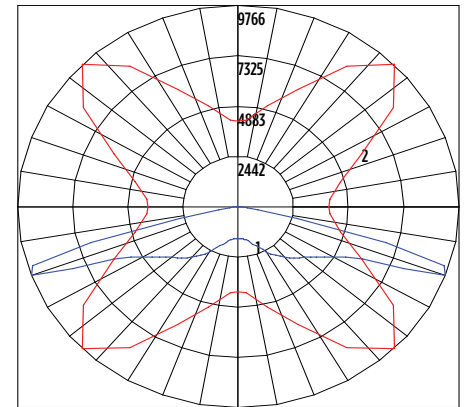
Zonal Lumen Summary		
Zone	Lumens	% Luminaire
Low (0-30)°	1646	9%
Medium (30-60)°	7453	43%
High (60-80)°	8405	48%
Very High (80-90)°	132	1%
Uplight (90-180)°	0	0%
Total Flux	17636	100%

ISO Footcandle



20' Mounting Height / 20' Grid Spacing
 5 FC 2 FC 1 FC 0.5 FC

Polar Curve



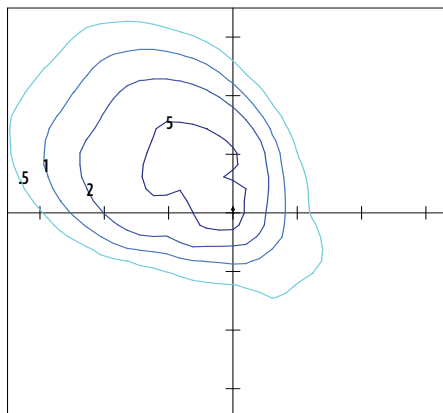
Vertical Plane Horizontal Cone

MRS-LED-18L-SIL-LC-40-70CRI

Luminaire Data	
Left Corner Distribution	
Description	4000 Kelvin, 70 CRI
Delivered Lumens	18,258
Watts	135
Efficacy	135
IES Type	N/A
BUG Rating	B3-U0-G3

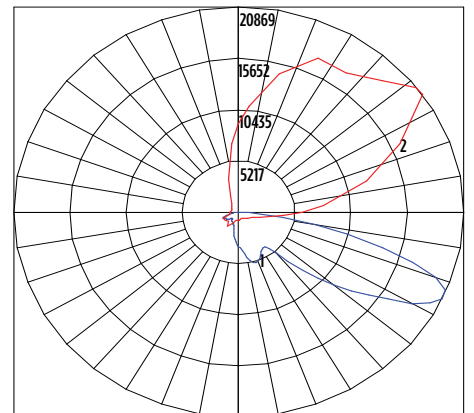
Zonal Lumen Summary		
Zone	Lumens	% Luminaire
Low (0-30)°	2412	13%
Medium (30-60)°	7504	41%
High (60-80)°	7698	42%
Very High (80-90)°	644	4%
Uplight (90-180)°	0	0%
Total Flux	18258	100%

ISO Footcandle



20' Mounting Height / 20' Grid Spacing
 5 FC 2 FC 1 FC 0.5 FC

Polar Curve



Vertical Plane Horizontal Cone



Job Name : Florida Indoor Tennis
Manufacturer : LSI LIGHTING SOLUTIONS PLUS
Model Number : MRS-LED-18L-SIL-5W-UNV-DIM-40-70CRI-IMSBT2-BLK

Type :
SL5

Mirada Small Area Light (MRS)

Have questions? Call us at (800) 436-7800

Type: _____

PHOTOMETRICS (CONT)

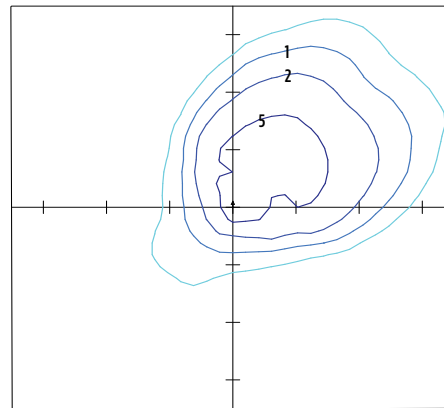
[Back to Quick Links](#)

MRM-LED-30L-SIL-5W-40-70CRI

Luminaire Data	
Right Corner Distribution	
Description	4000 Kelvin, 70 CRI
Delivered Lumens	18,138
Watts	135
Efficacy	134
IES Type	N/A
BUG Rating	B3-U0-G3

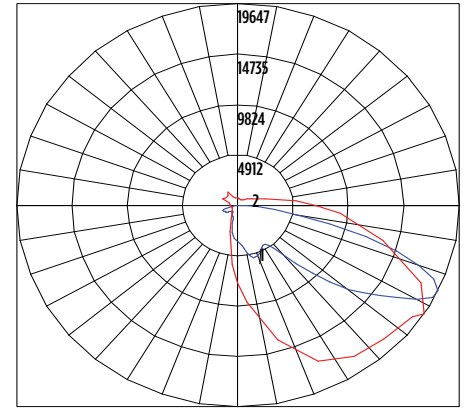
Zonal Lumen Summary		
Zone	Lumens	% Luminaire
Low (0-30°)	2317	13%
Medium (30-60°)	8066	44%
High (60-80°)	7214	40%
Very High (80-90°)	541	3%
Uplight (90-180°)	0	0%
Total Flux	18138	100%

ISO Footcandle



20' Mounting Height / 20' Grid Spacing
■ 5 FC ■ 2 FC ■ 1 FC ■ 0.5 FC

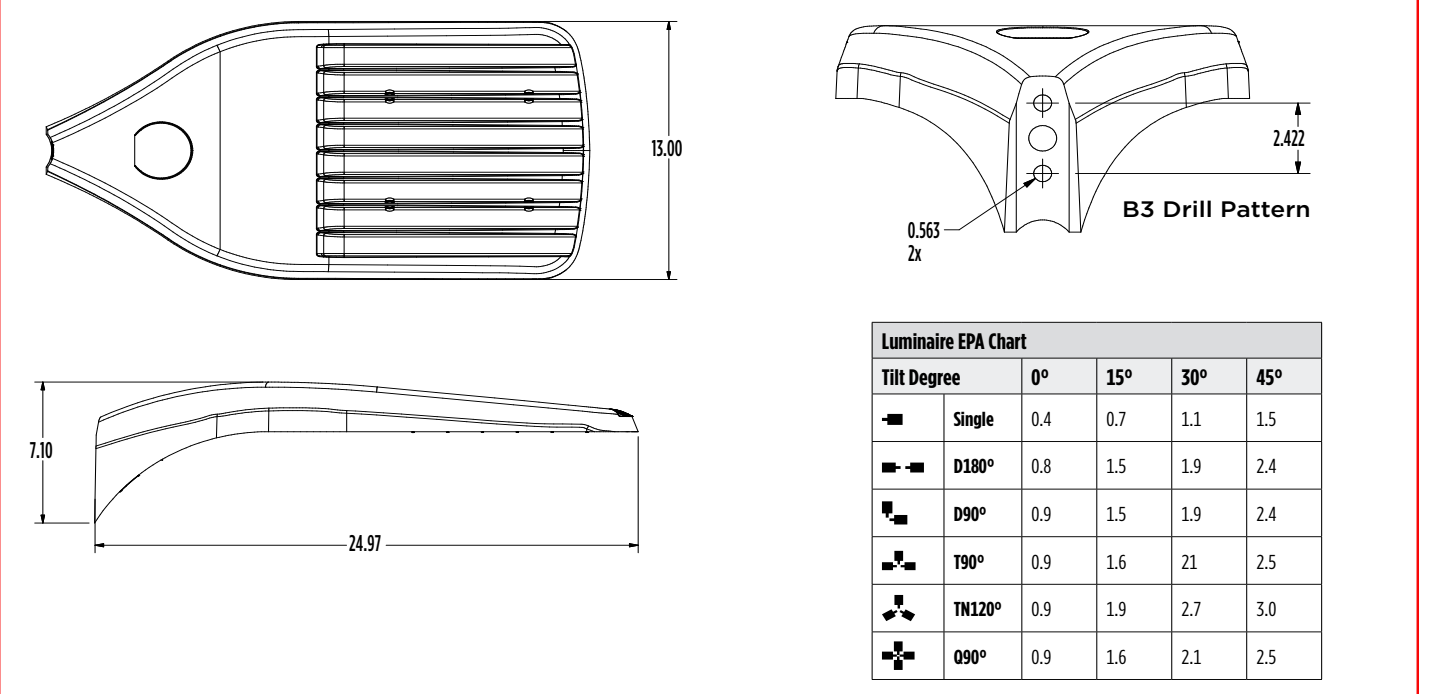
Polar Curve



■ Vertical Plane ■ Horizontal Cone

PRODUCT DIMENSIONS

[Back to Quick Links](#)



LSI Industries Inc. 10000 Alliance Rd. Cincinnati, OH 45242 • (513) 372-3200 • www.lsicorp.com
LSI Industries Inc. All Rights Reserved. Specifications and dimensions subject to industry standard tolerances. Specifications subject to change without notice.

Page 9/10 Rev. 07/24/24
SPEC.1046.B.1122

P&Z

Prepared By: CBMC Lighting Solutions | <https://cbmcinc.com/>

Pete Miller | pmiller@cbmcinc.com

PZ23-12000009
January 14, 2025
03/05/2025



Job Name : Florida Indoor Tennis

Manufacturer : LSI LIGHTING SOLUTIONS PLUS

Model Number : XWM-FT-LED-12L-40-UE-BLK-IMSBT1

Type :
W1



Catalog # : _____ Project : _____ Type : _____
Prepared By : _____ Date : _____

Mirada Medium Wall Sconce (XWM)

Outdoor Wall Sconce



OVERVIEW	
Lumen Package	3,000 - 21,000
Wattage Range	23 - 175
Efficacy Range (LPW)	125 - 158
Weight lbs(kg)	27 (12.2)
Control Options	IMSBT, ALB, ALS, PCI

QUICK LINKS

FEATURES & SPECIFICATIONS

Construction

- Rugged die-cast aluminum housing contains factory prewired driver and optical unit. Hinged die-cast aluminum wiring access door located underneath.
- Galvanized-steel universal wall mount bracket comes standard with hinging mechanism to easily access the junction box wire connections without removing the luminaire.
- Optional pole-mounting bracket (XPM) permits mounting to standard poles.
- Fixtures are finished with LSI's DuraGrip® polyester powder coat finishing process. The DuraGrip finish withstands extreme weather changes without cracking or peeling. Other standard LSI finishes available. Consult factory.
- Max shipping weight: 30lbs in carton

Optical System

- State-of-the-Art one piece silicone optic provides industry leading optical control while also acting as an integrated gasket reducing system complexity and improving fixture reliability.
- Proprietary silicone refractor optics provide exceptional coverage and uniformity in Types 2, 3, 4, and FT distributions.
- Silicone optical material does not yellow or crack with age and provides a typical light transmittance of 93-95%.
- Zero uplight.
- Available in 5000K, 4000K and 3000K color temperatures per ANSI C78.377. Also Available in Phosphor Converted Amber with Peak intensity at 610nm.
- Minimum CRI of 70.

Electrical

- High-performance programmable driver features over-voltage, under-voltage, short-circuit and over temperature protection. Custom lumen and wattage packages available.

- 0-10V dimming (10% - 100%) standard.
- Standard Universal Voltage (120-277 Vac) Input 50/60 Hz or optional High Voltage (347-480 Vac).
- L80 Calculated Life: >100k Hours
- Total harmonic distortion (THD): <20%
- 3L to 12L operating temperature: -40°C to +50°C (-40°F to +122°F)
- 15L operating temperature: -40°C to +45°C (-40°F to +113°F).
- 18L operating temperature: -40°C to +40°C (-40°F to +104°F).
- 21L operating temperature: -40°C to +35°C (-40°F to +95°F).
- Power factor (PF): >.90
- Input power stays constant over life.
- Optional 10kV surge protection device meets a minimum Category C Low operation (per ANSI/IEEE C62.41.2).
- High-efficacy LEDs mounted to metal-core circuit board to maximize heat dissipation
- Components are fully encased in potting material for moisture resistance. Driver complies with FCC standards. Driver and key electronic components can easily be accessed via hinged door.
- Optional integral emergency battery pack provides 90-minutes of constant power to the LED system, ensuring code compliance. A test switch/indicator button is installed on the housing for ease of maintenance. The fixture delivers 1500 lumens during emergency mode.

Controls

- Integral passive infrared Bluetooth™ motion sensor options. Fixtures operate independently and can be commissioned via an iOS or Android configuration app. Updates and modifications to the control strategy are easily implemented via an intuitive app.

- LSI's AirLink™ Blue lighting control system is a simple feature rich wireless Bluetooth mesh network. The integrated fixture sensor module provides wireless control of grouped fixtures based on motion sensors, daylight or a fully customizable schedule.

Installation

- Universal wall mounting plate easily mounts directly to 4" octagonal or square junction box.
- 2 fasteners secure the hinged door underneath the housing and provide quick & easy access to the electrical compartment for installing/servicing.
- Optional terminal block accepts up to 12 ga wire.

Warranty

- LSI luminaires carry a 5-year limited warranty. Refer to <https://www.lsicorp.com/resources/terms-conditions-warranty/> for more information.
- 1 Year warranty on Battery Back-up option.

Listings

- Listed to UL 1598 and UL 8750.
- Meets Buy American Act requirements.
- IDA compliant; with 3000K or lower color temperature selection.
- Title 24 Compliant; see local ordinance for qualification information.
- Suitable for wet Locations.
- IP65 rated luminaire per IEC 60598.
- 3G rated for ANSI C136.31 high vibration applications when pole mounted (using optional XPM bracket) or wall mounted.
- IK08 rated luminaire per IEC 66262 mechanical impact code
- DesignLights Consortium® (DLC) Premium qualified product. Not all versions of this product may be DLC Premium qualified. Please check the DLC Qualified Products List at www.designlights.org/QPL to confirm which versions are qualified.



LSI Industries Inc. 10000 Alliance Rd. Cincinnati, OH 45242 • (513) 372-3200 • www.lsicorp.com
LSI Industries Inc. All Rights Reserved. Specifications and dimensions subject to industry standard tolerances. Specifications subject to change without notice.

Page 1/7 Rev. 09/12/23
SPEC.1024.C.0823

P&Z

Prepared By: CBMC Lighting Solutions | <https://cbmcinc.com/>

Pete Miller | pmiller@cbmcinc.com

PZ23-12000009
January 14, 2025
03/05/2025



Job Name : Florida Indoor Tennis
Manufacturer : LSI LIGHTING SOLUTIONS PLUS
Model Number : XWM-FT-LED-12L-40-UE-BLK-IMSBT1

Type :
W1

Mirada Medium Wall Sconce (XWM) Outdoor Wall Sconce

Type : _____

Have questions? Call us at (800) 436-7800

ORDERING GUIDE

[Back to Quick Links](#)

TYPICAL ORDER EXAMPLE: XWM 2 LED 03L 30 UE BRZ ALSC				
Family	Distribution	Light Source	Lumen Package	Color Temperature
XWM - Mirada Medium Wall Sconce	2 - Type 2 3 - Type 3 4 - Type 4 FT - Type 4 Forward Throw	LED	3L - 3,000 4L - 4,000 6L - 6,000 8L - 8,000 12L - 12,000 15L - 15,000 18L - 18,000 21L - 21,000 Custom Lumen Packages ¹	30 - 3000K 40 - 4000K 50 - 5000K AMB - Phosphor Converted Amber ²
Voltage	Finish	Controls		Options
UE - Universal Voltage (120-277V) HV - High Voltage (347-480V)	BLK - Black BRZ - Dark Bronze GMG - Gun Metal Gray GPT - Graphite MSV - Metallic Silver PLP - Platinum Plus SVG - Satin Verde Green WHT - White	Blank - None Wireless Controls ALSC - AirLink Synapse Control System ALSCS01 - AirLink Synapse Control System with 8-12' Motion Sensor ALSCS02 - AirLink Synapse Control System with 12-20' Motion Sensor ALBCS1 - AirLink Blue Wireless Motion & Photo Sensor Controller (8-24' MH) ³ ALBCS2 - AirLink Blue Wireless Motion & Photo Sensor Controller (25-40' MH) ³ Standalone Controls DIM - 0-10v Dimming leads extended to housing exterior IMSBT1 - Integral Bluetooth™ Motion and Photocell Sensor (8-24' MH) ^{3,4} IMSBT2 - Integral Bluetooth™ Motion and Photocell Sensor (25-40' MH) ^{3,4} Button Type Photocells PCI120 - 120V PCI208-277 - 208 - 277V PCI347 - 347V		Blank - None BB - Battery Back-up (0°C) ⁵ CWBB - Cold Weather Battery Backup (-20°C) ⁵ XPMA - Pole Mounting Bracket SP1 - 10kV Surge Protection TB - Terminal Block



Need more information?
Click here for our glossary

Have additional questions?
Call us at (800) 436-7800



FUSING ACCESSORY ORDERING INFORMATION⁶

Part Number	Description
FK120⁷	FK120 - Single Fusing
FK277⁷	FK277 - Single Fusing
FK347⁷	FK347 - Single Fusing
DFK208⁷	DFK - Double Fusing
DFK240⁷	DFK - Double Fusing (240V)
DFK480⁷	DFK - Double Fusing (480V)

MOUNTING ACCESSORY ORDERING INFORMATION⁶

Part Number ⁸	Description
809374CLR	XWM Wet Location Surface Conduit/Wiring Box
751632	10' Linear Bird Spike Kit (2' Recommended per Luminaire)

1 Custom lumen and wattage packages available consult factory. Values are within industry standard tolerances but not DLC listed.
2 Only available in 6L Lumen Package. Consult factory for lead time and availability.
3 IMSBT and ALBCS control options are not available in 3L or 4L lumen packages when high voltage (HV) is specified.
4 IMSBTxL is field configurable via the Leviton app that can be downloaded from your smartphone's app store.

5 Not available in HV.
6 Accessories are shipped separately and field installed.
7 Fusing must be located in a hand hole for pole or in the junction box.
8 "CLR" to be replaced by paint finish selection. See Finish options for paint color selections.



Job Name : Florida Indoor Tennis
Manufacturer : LSI LIGHTING SOLUTIONS PLUS
Model Number : XWM-FT-LED-12L-40-UE-BLK-IMSBT1

Type :
W1

Mirada Medium Wall Sconce (XWM) Outdoor Wall Sconce

Type : _____

Have questions? Call us at (800) 436-7800

PERFORMANCE

[Back to Quick Links](#)

Delivered Lumens ¹												
Lumen Package	Distribution	CRI	3000K			4000K			5000K			Wattage
			Delivered Lumens	Efficacy	BUG Rating	Delivered Lumens	Efficacy	BUG Rating	Delivered Lumens	Efficacy	BUG Rating	
3L	2	70	3,178	138	B1-U0-G1	3,368	146	B1-U0-G1	9,853	159	B1-U0-G1	23
	3		3,224	140	B1-U0-G1	3,416	148	B1-U0-G1	3,361	145	B1-U0-G1	
	4		3,210	140	B1-U0-G2	3,364	146	B1-U0-G2	3,294	143	B1-U0-G2	
	FT		3,160	137	B1-U0-G1	3,349	145	B1-U0-G1	3,294	143	B1-U0-G1	
4L	2	70	4,230	139	B1-U0-G1	4,483	147	B1-U0-G1	4,410	145	B1-U0-G1	30
	3		4,291	141	B1-U0-G1	4,547	150	B1-U0-G1	4,473	147	B1-U0-G1	
	4		4,234	141	B1-U0-G2	4,437	148	B1-U0-G2	4,344	145	B1-U0-G2	
	FT		4,206	138	B1-U0-G1	4,458	147	B1-U0-G1	4,385	144	B1-U0-G1	
6L	2	70	6,326	134	B2-U0-G1	6,704	142	B2-U0-G2	6,595	140	B2-U0-G2	47
	3		6,417	136	B1-U0-G2	6,800	144	B2-U0-G2	6,689	142	B2-U0-G2	
	4		6,336	135	B1-U0-G3	6,640	141	B1-U0-G3	6,500	138	B1-U0-G3	
	FT		6,290	134	B2-U0-G2	6,666	142	B2-U0-G2	6,557	139	B2-U0-G2	
8L	2	70	8,166	128	B2-U0-G2	8,654	135	B2-U0-G2	8,513	133	B2-U0-G2	64
	3		8,283	129	B2-U0-G2	8,778	137	B2-U0-G2	8,635	134	B2-U0-G2	
	4		8,362	131	B1-U0-G3	8,763	137	B2-U0-G3	8,579	134	B1-U0-G3	
	FT		8,120	126	B2-U0-G2	8,605	134	B2-U0-G2	8,465	132	B2-U0-G2	
12L	2	70	11,492	149	B2-U0-G2	12,033	156	B3-U0-G2	11,927	155	B3-U0-G2	77
	3		11,757	153	B2-U0-G2	12,311	160	B2-U0-G2	12,203	158	B2-U0-G2	
	4		11,486	149	B2-U0-G3	12,058	157	B2-U0-G3	11,716	152	B2-U0-G3	
	FT		11,721	152	B2-U0-G2	12,274	159	B2-U0-G3	12,166	158	B2-U0-G3	
15L	2	70	14,221	145	B3-U0-G2	14,891	152	B3-U0-G2	14,760	151	B3-U0-G2	98
	3		14,549	148	B2-U0-G2	15,235	155	B2-U0-G2	15,101	154	B2-U0-G2	
	4		14,099	144	B2-U0-G3	14,801	151	B2-U0-G3	14,382	147	B2-U0-G3	
	FT		14,505	148	B2-U0-G3	15,189	155	B2-U0-G3	15,055	154	B2-U0-G3	
18L	2	70	16,894	138	B3-U0-G3	17,690	145	B3-U0-G3	17,534	144	B3-U0-G3	122
	3		17,285	142	B3-U0-G3	18,099	148	B3-U0-G3	17,940	147	B3-U0-G3	
	4		16,951	139	B2-U0-G3	17,795	146	B3-U0-G3	17,291	142	B3-U0-G3	
	FT		17,231	141	B3-U0-G3	18,044	148	B3-U0-G3	17,885	147	B3-U0-G3	
21L	2	70	19,961	133	B3-U0-G3	20,902	139	B3-U0-G3	20,718	138	B3-U0-G3	150
	3		20,422	136	B3-U0-G3	21,385	143	B3-U0-G3	21,197	141	B3-U0-G3	
	4		19,768	132	B3-U0-G4	20,753	138	B3-U0-G5	20,165	134	B3-U0-G4	
	FT		20,360	136	B3-U0-G3	21,320	142	B3-U0-G3	21,132	141	B3-U0-G3	

Electrical Data (Amps) - 3000K/4000K/5000K ²						
Lumen Package	120V	208V	240V	277V	347V	480V
3L	0.19	0.11	0.10	0.08	0.07	0.05
4L	0.25	0.14	0.13	0.11	0.09	0.06
6L	0.39	0.23	0.20	0.17	0.14	0.10
9L	0.53	0.31	0.27	0.23	0.18	0.13
12L	0.64	0.37	0.32	0.28	0.22	0.16
15L	0.82	0.47	0.41	0.35	0.28	0.20
18L	1.02	0.59	0.51	0.44	0.35	0.25
21L	1.25	0.72	0.63	0.54	0.43	0.31

Recommended Lumen Maintenance - XWM ³					
Ambient Temperature C°	Initial ⁴	25K hrs. ⁴	50K hrs. ⁴	75K hrs. ⁵	100K hrs. ⁵
35	99%	97%	95%	93%	91%
50	100%	98%	95%	93%	90%

Delivered Lumens (Phosphor Converted Amber)					
Lumen Package	Distribution	Amber			Wattage
		Delivered Lumens	Efficacy	BUG Rating	
6L	2	3,325	76	B1-U0-G1	44
	3	3,385	78	B1-U0-G1	
	4	3,310	75	B1-U0-G1	
	FT	3,343	77	B1-U0-G1	

- LEDs are frequently updated therefore values are nominal
- Electrical data at 25C (77F). Actual wattage may differ by +/-10%.
- Lumen maintenance values at 25°C are calculated per TM-21 based on LM-80 data and in-situ luminaire testing.
- In accordance with IESNA TM-21-II, Projected Values represent interpolated value based on time durations that are within six times (6X) the IESNA LM-80-08 total test duration (in hours) for the device under testing ((DUT) i.e. the packaged LED chip).
- In accordance with IESNA TM-21-II, Calculated Values represent time durations that exceed six times NA LM-80-08 total test duration (in hours) for the device under testing ((DUT) i.e. the packaged LED chip).



LSI Industries Inc. 10000 Alliance Rd. Cincinnati, OH 45242 • (513) 372-3200 • www.lsicorp.com
LSI Industries Inc. All Rights Reserved. Specifications and dimensions subject to industry standard tolerances. Specifications subject to change without notice.

Page 3/7 Rev. 09/12/23
SPEC.1024.C.0823

Prepared By: CBMC Lighting Solutions | <https://cbmcinc.com/>

Pete Miller | pmiller@cbmcinc.com

PZ23-12000009
January 14, 2025
03/05/2025



Job Name : Florida Indoor Tennis
Manufacturer : LSI LIGHTING SOLUTIONS PLUS
Model Number : XWM-FT-LED-12L-40-UE-BLK-IMSBT1

Type :
W1

Mirada Medium Wall Sconce (XWM) Outdoor Wall Sconce

Type : _____

Have questions? Call us at (800) 436-7800

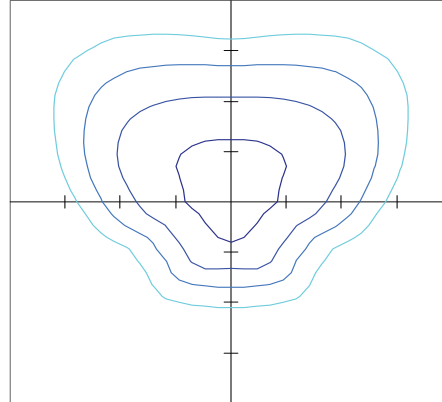
PHOTOMETRICS

[Back to Quick Links](#)

XWM-FT-LED-12L-40

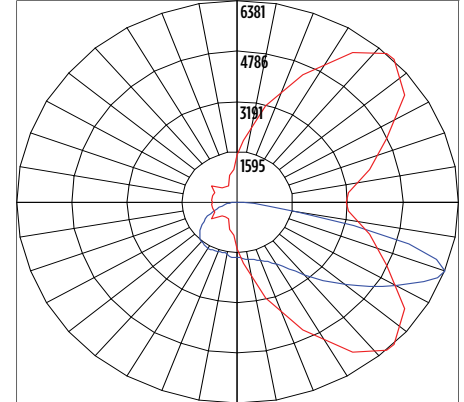
Luminaire Data		
Type FT Distribution		
Description	4000 Kelvin, 70 CRI	
Delivered Lumens	12,274	
Watts	77	
Efficacy	159	
IES Type	Type IV - Short	
BUG Rating	B2-U0-G3	
Zonal Lumen Summary		
Zone	Lumens	% Luminaire
Low (0-30°)	1,578	13%
Medium (30-60°)	5,798	47%
High (60-80°)	4,576	37%
Very High (80-90°)	322	3%
Uplight (90-180°)	0	0%
Total Flux	12,274	100%

ISO Footcandle



15' Mounting Height / 15' Grid Spacing
 5 FC 2 FC 1 FC 0.5 FC

Polar Curve



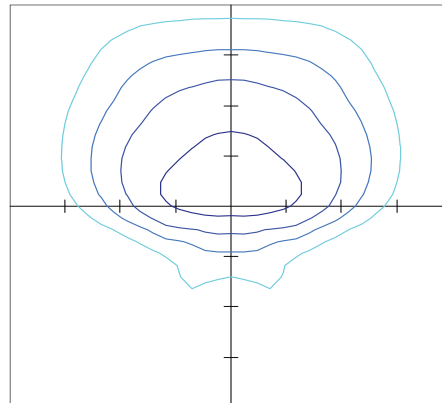
Vertical Plane Horizontal Cone

XWM-4-LED-12L-40

Luminaire Data		
Type 4 Distribution		
Description	4000 Kelvin, 70 CRI	
Delivered Lumens	12,058	
Watts	77	
Efficacy	157	
IES Type	Type IV - Very Short	
BUG Rating	B2-U0-G3	

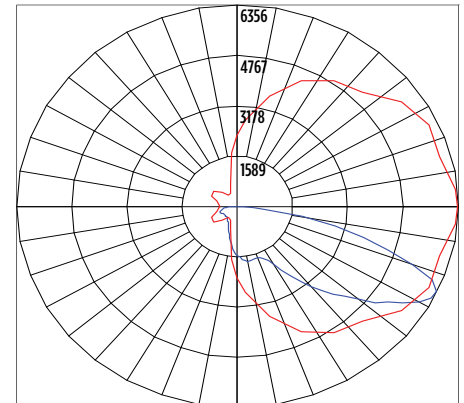
Zonal Lumen Summary		
Zone	Lumens	% Luminaire
Low (0-30°)	1,345	11%
Medium (30-60°)	5,394	45%
High (60-80°)	4,855	40%
Very High (80-90°)	464	4%
Uplight (90-180°)	0	0%
Total Flux	12,058	100%

ISO Footcandle



15' Mounting Height / 15' Grid Spacing
 5 FC 2 FC 1 FC 0.5 FC

Polar Curve



Vertical Plane Horizontal Cone



LSI Industries Inc. 10000 Alliance Rd. Cincinnati, OH 45242 • (513) 372-3200 • www.lsicorp.com
 LSI Industries Inc. All Rights Reserved. Specifications and dimensions subject to industry standard tolerances. Specifications subject to change without notice.

Page 5/7 Rev. 09/12/23
 SPEC.1024.C.0823

P&Z

Prepared By: CBMC Lighting Solutions | <https://cbmcinc.com/>

Pete Miller | pmiller@cbmcinc.com

PZ23-12000009
 January 14, 2025
 03/05/2025



Job Name : Florida Indoor Tennis
Manufacturer : LSI LIGHTING SOLUTIONS PLUS
Model Number : XWM-FT-LED-12L-40-UE-BLK-IMSBT1

Type :
W1

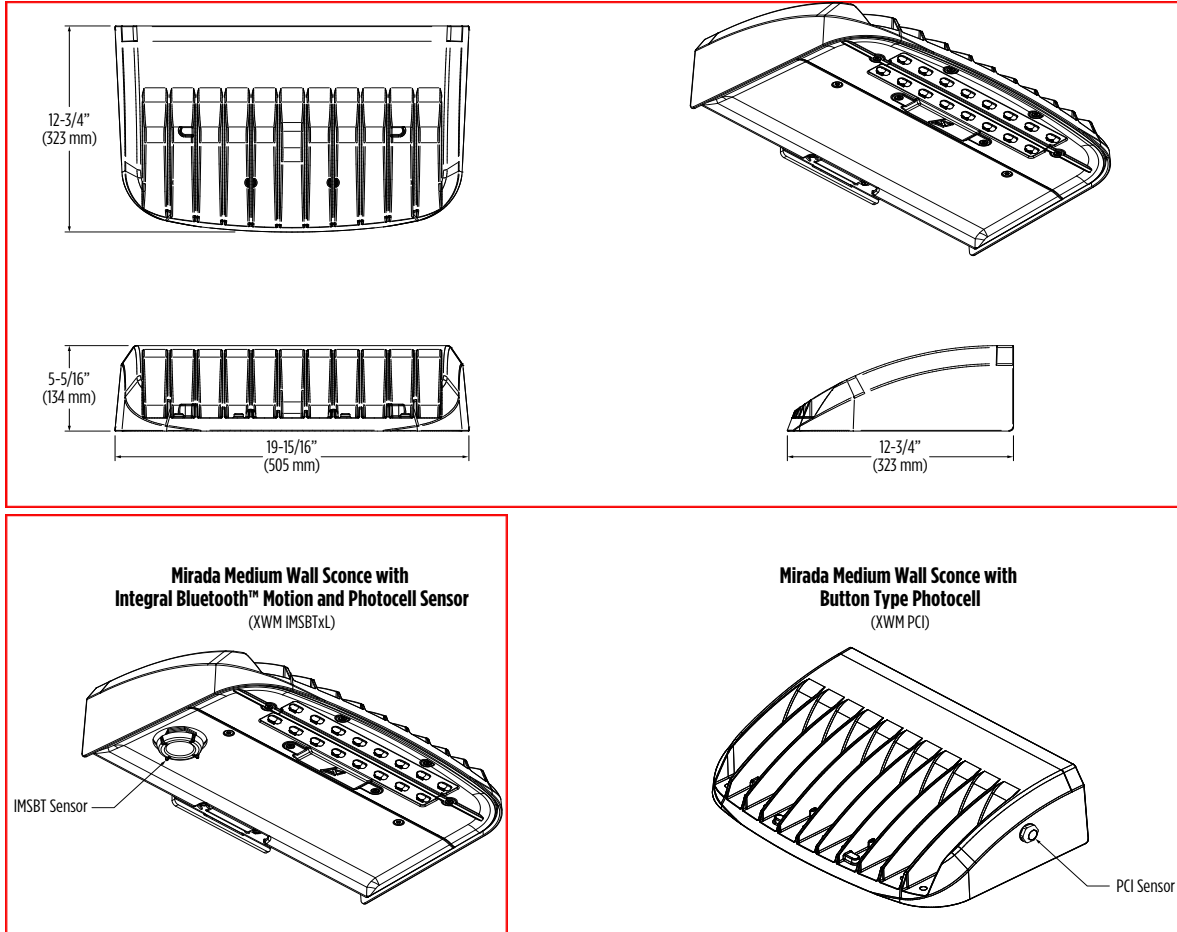
Mirada Medium Wall Sconce (XWM) Outdoor Wall Sconce

Type : _____

Have questions? Call us at (800) 436-7800

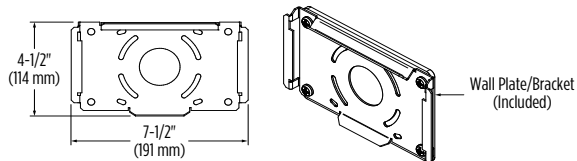
PRODUCT DIMENSIONS

[Back to Quick Links](#)

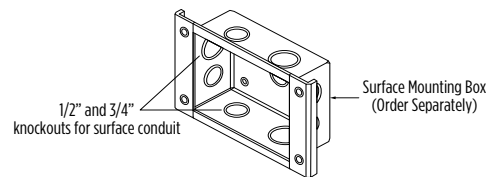


Mounting Options

Mounting Over Junction Box (Standard/Included)



XWM Wet Location Surface Conduit/Wiring Box (809374CLR)



LSI Industries Inc. 10000 Alliance Rd. Cincinnati, OH 45242 • (513) 372-3200 • www.lsicorp.com
 LSI Industries Inc. All Rights Reserved. Specifications and dimensions subject to industry standard tolerances. Specifications subject to change without notice.

Page 6/7 Rev. 09/12/23
 SPEC.1024.C.0823

P&Z

Prepared By: CBMC Lighting Solutions | <https://cbmcinc.com/>

Pete Miller | pmiller@cbmcinc.com

PZ23-1200009
 January 14, 2025
 03/05/2025



Job Name : Florida Indoor Tennis

Manufacturer : LSI LIGHTING SOLUTIONS PLUS

Model Number : XWS-LED-3L-FTW-UNV-DIM-40-80CRI-IMBST1L-BLK-BB

Type :
W2



Catalog # : _____ Project : _____ Type : _____
Prepared By : _____ Date : _____

Mirada Small Wall Sconce

Visual Comfort (XWS VC)

Outdoor LED Wall Light



OVERVIEW	
Lumen Package (lm)	1,000 - 6,000
Wattage Range (W)	10 - 52
Efficacy Range (LPW)	119 - 163
Weight lbs (kg)	8 (3.6)

QUICK LINKS

[Ordering Guide](#)[Performance](#)[Photometrics](#)[Dimensions](#)

FEATURES & SPECIFICATIONS

Construction

- Rugged die-cast aluminum housing.
- Fixtures are finished with LSI's DuraGrip® polyester powder coat finishing process. The DuraGrip finish withstands extreme weather changes without cracking or peeling. Other standard LSI finishes available. Consult factory.
- Extended housing available with 1/2" threaded hubs for surface conduit and rated wire.
- Standard luminaire shipping weight: 10 lbs in carton.
- Max luminaire shipping weight (with back housing): 20 lbs in carton.

Optical System

- Choice of acrylic lens or high impact resistant polycarbonate lens
- The lens is fully gasketed with a one-piece solid silicone gasket to keep out moisture and dust, providing an IP65 rating for the luminaire
- Reflector system with recessed light engine reduces glare and brightness.
- Forward Throw Wide and Medium distributions available.
- Optional diffused lens for reduced LED pixilation over the lens and maximum visual comfort.
- Zero uplight.
- Available in 5000K, 4000K, 3500K, 3000K and 2700K color temperatures per ANSI C78.377.
- Minimum CRI of 80

Electrical

- High-performance driver features over-voltage under-voltage, short-circuit and over temperature protection.

- 0-10V dimming (10% - 100%) standard.
- Standard Universal Voltage (120-277 VAC) Input 50/60 Hz or optional High Voltage (347-480 VAC).
- L70 Calculated Life: >60k Hours
- Total harmonic distortion (THD): <20%
- Operating temperature: -40°C to +50°C (-40°F to +122°F).
- Power factor (PF): >.90
- Input power stays constant over life.
- Optional 10kV surge protection device meets a minimum Category C Low operation (per ANSI/IEEE C62.41.2).
- High-efficacy LEDs mounted to metal-core circuit board to maximize heat dissipation
- Driver is fully encased in potting material for moisture resistance. Driver complies with FCC standards. Accessible driver and electrical components.
- Optional Dual Drivers/Circuit/Power Feeds.
- Optional battery backup provides 90-minutes of constant power to the LED system, ensuring code compliance. A test switch/indicator button is installed on the housing for ease of maintenance. Standard battery rated for 0° to 50° with cold weather battery rated for -20°C to 50°. 120-277V Only.

Controls

- Optional integral passive infrared Bluetooth™ motion and photocell sensor. Fixtures operate independently and can be commissioned via iOS or Android configuration app.
- LSI's AirLink™ wireless control system options reduce energy and maintenance costs while optimizing light quality 24/7.

Installation

- Universal wall mounting plate mounts directly to vertical surface or 4" junction box (octagonal or square).
- Luminaire hinges to the top of the mounting plate and is secured via two flush mount screws that help to conceal the hardware and prevent over tightening during installation.

Warranty

- LSI luminaires carry a 5-year limited warranty. Refer to <https://www.lsicorp.com/resources/terms-conditions-warranty/> for more information.

Listings

- Listed to UL 1598 and UL 8750.
- Meets Buy American Act requirements.
- IDA compliant; with 2700K or 3000K color temperature selection.
- Title 24 Compliant; see local ordinance for qualification information.
- Suitable for wet locations.
- IP65 rated luminaire per IEC 60598-1.
- IK10 rated luminaire per IEC 60622 mechanical impact code with clear polycarbonate lens (MTP).
- DesignLights Consortium® (DLC) qualified product. Not all versions of this product are DLC qualified. Please check the DLC Qualified Products List at www.designlights.org/QPL to confirm which versions are qualified.



LSI Industries Inc. 10000 Alliance Rd. Cincinnati, OH 45244 • (513) 372-3200 • www.lsicorp.com
LSI Industries Inc. All Rights Reserved. Specifications and dimensions subject to industry standard tolerances. Specifications subject to change without notice.

Page 1/7 Rev. 06/11/24
SPEC.1021.D.0723

P&Z

Prepared By: CBMC Lighting Solutions | <https://cbmcinc.com/>

Pete Miller | pmiller@cbmcinc.com

PZ23-12000009
January 14, 2025
03/05/2025



Job Name : Florida Indoor Tennis
Manufacturer : LSI LIGHTING SOLUTIONS PLUS
Model Number : XWS-LED-3L-FTW-UNV-DIM-40-80CRI-IMBST1L-BLK-BB

Type :
W2

Mirada Small Wall Sconce Visual Comfort (XWS VC)

Type : _____

Have questions? Call us at (800) 436-7800

ORDERING GUIDE

[Back to Quick Links](#)

TYPICAL ORDER EXAMPLE: XWS LED 6L FTW UNV DIM 40 80CRI ALBCS1 BLK EH					
Prefix	Light Source	Lumen Package	Distribution/Lens	Voltage	Driver
XWS - Mirada Small Wall Sconce	LED	1L - 1,000 (10w) UNV Only 2L - 2,000 (15w) 3L - 3,000 (26w) 5L - 5,000 (39w) 6L - 6,000 (52w) Custom Lumen Packages ¹	FTW - Forward Throw Wide Clear Acrylic MT - Medium Throw Clear Acrylic MTD - Medium Throw Diffuse Acrylic MTP - Medium Throw Clear Polycarbonate MTPD - Medium Throw Diffuse Polycarbonate	UNV - Universal Voltage (120-277V) HV - High Voltage (347-480V)	DIM - 0-10v Dimming (0-10%)
Color Temperature	Color Rendering	Controls		Finish	Options
27 - 2700K 30 - 3000K 35 - 3500K 40 - 4000K 50 - 5000K	80CRI - 80 CRI	Blank - None Wireless Controls ALSC - AirLink Synapse Control System ^{2,3,4} ALSCS1 - AirLink Synapse Control System with 8-12" MH Motion Sensor ^{2,3,4} ALSCS2 - AirLink Synapse Control System with 12-20" MH Motion Sensor ^{2,3,4} ALBCS1 - AirLink Blue Wireless Motion & Photo Sensor Controller (8-24" mounting height) ^{2,3,4} Standalone Controls EXT - 0-10v Dimming leads extended to housing exterior IMBST1L - Integral Bluetooth™ Motion and Photocell Sensor 8-24" MH ^{2,3,4,5} Button Type Photocells PCI120 - 120V PCI208-277 - 208 - 277V PCI347 - 347V		BLK - Black BRZ - Dark Bronze GMG - Gun Metal Gray GPT - Graphite MSV - Metallic Silver PLP - Platinum Plus SVG - Satin Verde Green WHT - White	Blank - None 2DP - Dual Driver, Circuit & Power Feed ^{3,4,6,7} BB - Battery Back-up (0°C) ^{3,4,5} CWBB - Cold Weather Battery Backup(-20°C) ^{3,4,9} EH - Extended Housing ⁴ SP1 - 10kV Surge Protection Device TP - Tamper Proof ¹⁰



Need more information?
[Click here for our glossary.](#)

Have additional questions?
Call us at (800) 436-7800



ACCESSORY ORDERING INFORMATION⁷

Part Number	Description
758270	XWS Performance Lens (FTW)
758267	XWS Clear Acrylic Lens (MT)
758268	XWS Diffuse Acrylic Lens (MTD)
758271	XWS Polycarbonate Vandal Lens (MTP)

Part Number	Description
758274CLR	XWS Extended Housing/Surface Conduit Wiring Box
760159CLR	XWS Spacer Plate/Wiring Box
783974	XWS Tamper Resistant Hardware
783975	XWS Tamper Resistant Hardware Screw Driver

Battery Backup

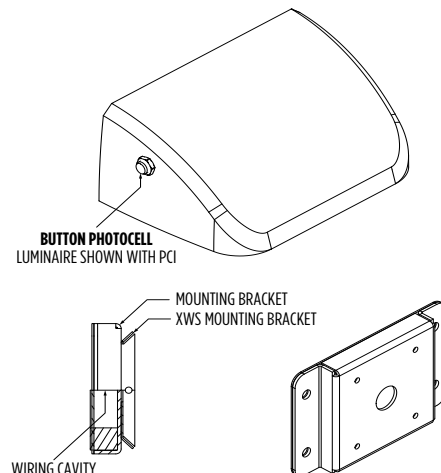
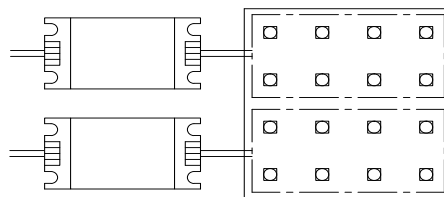
- Emergency battery system provides 90-minutes of constant power to the LED system, ensuring code compliance.
- A test switch/indicator button is installed on the housing for ease of maintenance.
- 8w battery delivers ~1,200 lumens during emergency mode.
- 20w battery delivers ~3,000 lumens during emergency mode.



Luminaire shown with sensor & battery backup

Dual Driver, Circuit, & Power Feed

- Dual drivers and circuit provide redundant sources to ensure that failure of one component will not leave total darkness in any space. Dual power feeds allow for wiring to inverters to reduce load during emergency operation. Extended housing required.



1 Custom lumen and wattage packages available, consult factory. Values are within industry standard tolerances but not DLC listed.
2 When high voltage (HV) is specified, IMS, ALB and ALS control options are limited to the 6L lumen package.
3 Option requires EH extended housing.
4 For applications with surface conduit, there is limited hub accessibility when ordering with controls, battery backup or dual driver options. Consult factory.
5 IMBST is field configurable via the LSI app that can be downloaded from your smartphone's native app store.

6 Not available with controls.
7 Not available in 1L, 2L and 3L lumen packages.
8 Accessories are shipped separately and field installed.
9 Universal Voltage Only (120-277V).
10 Tamper-proof screwdriver must be ordered separately (see accessory ordering information)



Job Name : Florida Indoor Tennis
Manufacturer : LSI LIGHTING SOLUTIONS PLUS
Model Number : XWS-LED-3L-FTW-UNV-DIM-40-80CRI-IMBST1L-BLK-BB

Type :
W2

Mirada Small Wall Sconce Visual Comfort (XWS VC)

Type : _____

Have questions? Call us at (800) 436-7800

PERFORMANCE

[Back to Quick Links](#)

Delivered Lumens ¹																		
Lumen Package	Distribution	CRI	2700K CCT			3000K CCT			3500K CCT			4000K CCT			5000K CCT			Wattage
			Delivered Lumens	Efficacy	Bug Rating	Delivered Lumens	Efficacy	Bug Rating	Delivered Lumens	Efficacy	Bug Rating	Delivered Lumens	Efficacy	Bug Rating	Delivered Lumens	Efficacy	Bug Rating	
1L	FTW	80	1,433	143	B1-U0-G1	1512	151	B1-U0-G1	1549	155	B1-U0-G1	1,569	157	B1-U0-G1	1,582	158	B1-U0-G1	10
	MT		1,480	148	B1-U0-G0	1562	156	B1-U0-G0	1600	160	B1-U0-G0	1,621	162	B1-U0-G0	1,635	163	B1-U0-G0	
	MTD		1,385	138	B1-U0-G1	1461	146	B1-U0-G1	1497	150	B1-U0-G1	1,516	152	B1-U0-G1	1,529	153	B1-U0-G1	
	MTP		1,478	148	B1-U0-G0	1561	156	B1-U0-G0	1598	160	B1-U0-G0	1,619	162	B1-U0-G0	1,633	163	B1-U0-G0	
	MTPD		1,276	128	B1-U0-G1	1347	135	B1-U0-G1	1380	138	B1-U0-G1	1,398	140	B1-U0-G1	1,410	141	B1-U0-G1	
2L	FTW	80	1,961	131	B1-U0-G1	2,071	138	B1-U0-G1	2,120	141	B1-U0-G1	2,145	143	B1-U0-G1	2,167	144	B1-U0-G1	15
	MT		2,023	135	B1-U0-G0	2,136	142	B1-U0-G0	2,188	146	B1-U0-G0	2,216	148	B1-U0-G0	2,236	149	B1-U0-G0	
	MTD		1,892	126	B1-U0-G1	1,997	133	B1-U0-G1	2,045	136	B1-U0-G1	2,072	138	B1-U0-G1	2,090	139	B1-U0-G1	
	MTP		2,020	135	B1-U0-G0	2,133	142	B1-U0-G0	2,184	146	B1-U0-G0	2,213	148	B1-U0-G0	2,233	149	B1-U0-G0	
	MTPD		1,744	116	B1-U0-G1	1,842	123	B1-U0-G1	1,887	126	B1-U0-G1	1,911	127	B1-U0-G1	1,928	129	B1-U0-G1	
3L	FTW	80	3,432	132	B1-U0-G1	3,624	139	B1-U0-G1	3,710	143	B1-U0-G1	3,759	145	B1-U0-G1	3,793	146	B1-U0-G1	26
	MT		3,542	136	B1-U0-G1	3,739	144	B1-U0-G1	3,829	147	B1-U0-G1	3,879	149	B1-U0-G1	3,914	151	B1-U0-G1	
	MTD		3,495	134	B1-U0-G1	3,690	142	B1-U0-G1	3,778	145	B1-U0-G1	3,828	147	B1-U0-G1	3,862	149	B1-U0-G1	
	MTP		3,537	136	B1-U0-G1	3,735	144	B1-U0-G1	3,824	147	B1-U0-G1	3,874	149	B1-U0-G1	3,909	150	B1-U0-G1	
	MTPD		3,054	117	B1-U0-G1	3,224	124	B1-U0-G1	3,303	127	B1-U0-G1	3,345	129	B1-U0-G1	3,375	130	B1-U0-G1	
5L	FTW	80	4,980	128	B1-U0-G1	5,257	135	B1-U0-G1	5,383	138	B1-U0-G1	5,454	140	B1-U0-G1	5,503	141	B1-U0-G1	39
	MT		5,138	132	B1-U0-G1	5,425	139	B1-U0-G1	5,555	142	B1-U0-G1	5,628	144	B1-U0-G1	5,678	146	B1-U0-G1	
	MTD		4,805	123	B1-U0-G1	5,074	130	B1-U0-G1	5,195	133	B2-U0-G1	5,263	135	B2-U0-G1	5,310	136	B2-U0-G1	
	MTP		5,132	132	B1-U0-G1	5,418	139	B1-U0-G1	5,548	142	B1-U0-G1	5,621	144	B1-U0-G1	5,671	145	B1-U0-G1	
	MTPD		4,430	114	B1-U0-G1	1,677	120	B1-U0-G1	4,791	123	B1-U0-G1	4,852	124	B1-U0-G1	4,896	126	B1-U0-G1	
6L	FTW	80	6,362	122	B1-U0-G1	6,717	129	B2-U0-G1	6,877	132	B2-U0-G1	6,968	134	B2-U0-G1	7,031	135	B2-U0-G1	52
	MT		6,564	126	B2-U0-G1	6,931	133	B2-U0-G1	7,097	136	B2-U0-G1	7,190	138	B2-U0-G1	7,254	140	B2-U0-G1	
	MTD		6,139	118	B2-U0-G1	6,482	125	B2-U0-G1	6,637	128	B2-U0-G1	6,724	129	B2-U0-G1	6,784	130	B2-U0-G1	
	MTP		6,354	122	B2-U0-G1	6,708	129	B2-U0-G1	6,869	132	B2-U0-G1	6,959	134	B2-U0-G1	7,021	135	B2-U0-G1	
	MTPD		5,659	109	B1-U0-G1	5,975	115	B2-U0-G1	6,121	118	B2-U0-G1	6,199	119	B2-U0-G1	6,255	120	B2-U0-G1	

Electrical Data - Current Draw AMPS ²						
Lumen Package	120V	208V	240V	277V	347V	480V
1L	0.08	0.05	0.04	0.04	0.03	0.02
2L	0.12	0.07	0.06	0.05	0.04	0.03
3L	0.21	0.12	0.11	0.09	0.07	0.05
5L	0.32	0.19	0.16	0.14	0.11	0.08
6L	0.43	0.25	0.22	0.19	0.15	0.11

Recommended Lumen Maintenance - XWS ³					
Ambient Temperature C°	Initial ⁴	25K hrs. ⁴	50K hrs. ⁴	75K hrs. ⁵	100K hrs. ⁵
25	100%	97%	92%	88%	84%
40	100%	95%	90%	85%	81%

- LEDs are frequently updated therefore values are nominal
- Electrical data at 25C (77F). Actual wattage may differ by +/-10%.
- Lumen maintenance values at 25°C are calculated per TM-21 based on LM-80 data and in-situ luminaire testing.
- In accordance with IESNA TM-21-II, Projected Values represent interpolated value based on time durations that are within six times (6X) the IESNA LM-80-08 total test duration (in hours) for the device under testing ((DUT) i.e. the packaged LED chip).
- In accordance with IESNA TM-21-II, Calculated Values represent time durations that exceed six times NA LM-80-08 total test duration (in hours) for the device under testing ((DUT) i.e. the packaged LED chip).



Job Name : Florida Indoor Tennis
Manufacturer : LSI LIGHTING SOLUTIONS PLUS
Model Number : XWS-LED-3L-FTW-UNV-DIM-40-80CRI-IMBST1L-BLK-BB

Type :
W2

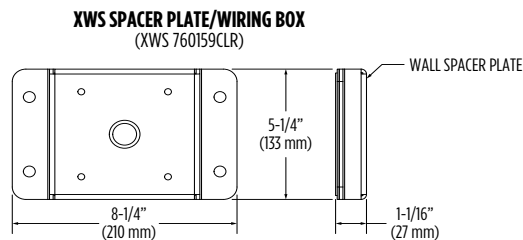
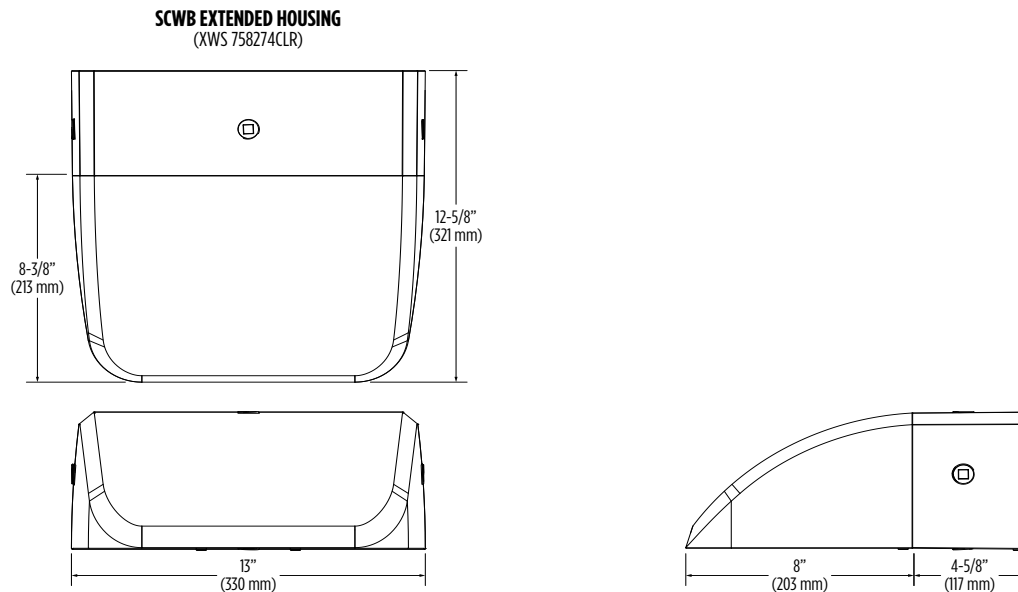
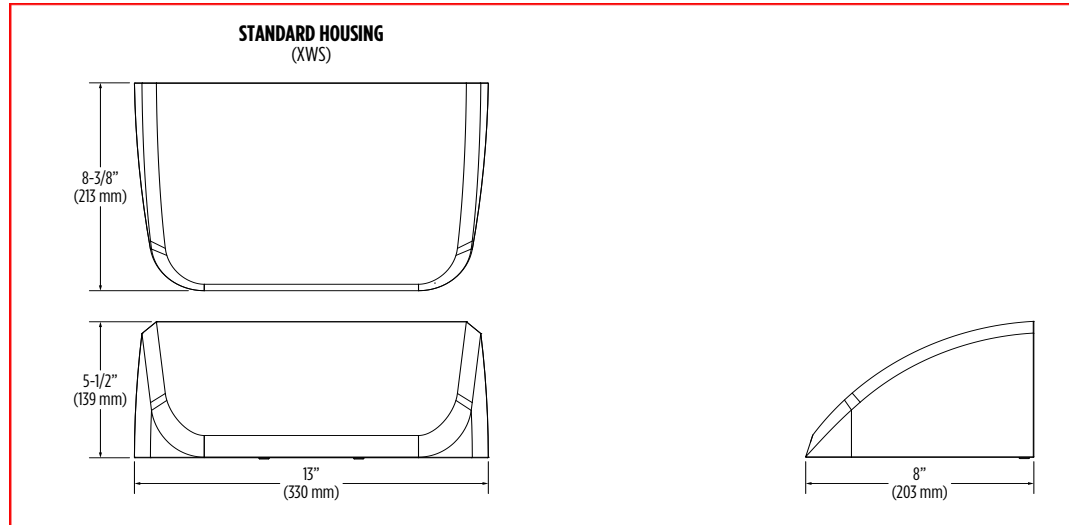
Mirada Small Wall Sconce Visual Comfort (XWS VC)

Type : _____

Have questions? Call us at (800) 436-7800

PRODUCT DIMENSIONS

[Back to Quick Links](#)



NOTE: Wall spacer plate allows the luminaire to float off the wall and provides space for securing wires (8.25" X 5.25" X 1.07").



LSI Industries Inc. 10000 Alliance Rd. Cincinnati, OH 45242 • (513) 372-3200 • www.lsicorp.com
 LSI Industries Inc. All Rights Reserved. Specifications and dimensions subject to industry standard tolerances. Specifications subject to change without notice.

Page 6/7 Rev. 06/11/24
 SPEC.1021.D.0723

P&Z

Prepared By: CBMC Lighting Solutions | <https://cbmcinc.com/>

Pete Miller | pmiller@cbmcinc.com

PZ23-12000009
 January 14, 2025
 03/05/2025



Job Name : Florida Indoor Tennis

Manufacturer : LSI LIGHTING SOLUTIONS PLUS

Model Number : MRS-LED-21L-SIL-FT-UNV-DIM-40-70CRI-IMSBTL1-BLK-BKS-XBO-WM-BLK

Type :

W3



Catalog # : _____ Project : _____
Prepared By : _____ Date : _____

Mirada Small Area (MRS)

Outdoor LED Area Light



OVERVIEW	
Lumen Package	6,000 - 30,000
Wattage Range	39 - 209
Efficacy Range (LPW)	112 - 163
Weight lbs(kg)	20 (9.1)
Control Options	IMSBT, ALB, ALS, 7-Pin, PCI

QUICK LINKS

[Ordering Guide](#)[Performance](#)[Photometrics](#)[Dimensions](#)

FEATURES & SPECIFICATIONS

Construction

- Rugged die-cast aluminum housing contains factory prewired driver and optical unit. Cast aluminum wiring access door located underneath.
- Fixtures are finished with LSI's DuraGrip® polyester powder coat finishing process. The DuraGrip finish withstands extreme weather changes without cracking or peeling. Other standard LSI finishes available. Consult factory.
- Shipping weight: 27 lbs in carton.

Optical System

- State-of-the-Art one piece silicone optic sheet delivers industry leading optical control with an integrated gasket to provide IP66 rated seal.
- Proprietary silicone refractor optics provide exceptional coverage and uniformity in distribution types 2, 3, 4, 5W, FT, and LC/RC.
- Silicone optical material does not yellow or crack with age and provides a typical light transmittance of 93-95%.
- Zero uplight.
- Available in 5000K, 4000K, and 3000K color temperatures per ANSI C78.377
- Minimum CRI of 70.
- Integral louver (IL) and integral half louver (IH) options available for enhanced backlight control.

Electrical

- High-performance driver features over-voltage, under-voltage, short-circuit and over temperature protection.

- 0-10V dimming (10% - 100%) standard.
- Standard Universal Voltage (120-277 VAC) Input 50/60 Hz or optional High Voltage (347-480 VAC).
- L70 Calculated Life: >60k Hours
- Total harmonic distortion: <20%
- Operating temperature: -40°C to +50°C (-40°F to +122°F). 30L lumen packages rated to +40°C.
- Power factor: >.90
- Input power stays constant over life.
- Field replaceable 10kV surge protection device meets a minimum Category C Low operation (per ANSI/IEEE C62.41.2).
- High-efficacy LEDs mounted to metal-core circuit board to maximize heat dissipation
- Driver is fully encased in potting material for moisture resistance and complies with FCC standards. Driver and key electronic components can easily be accessed.

Controls

- Optional integral passive infrared Bluetooth™ motion and photocell sensor. Fixtures operate independently and can be commissioned via iOS or Android configuration app.
- LSI's AirLink™ wireless control system options reduce energy and maintenance costs while optimizing light quality 24/7.

Installation

- Designed to mount to square or round poles.
- A single fastener secures the hinged door,

underneath the housing and provides quick & easy access to the electrical compartment.

- Included terminal block accepts up to 12 ga. wire.
- Utilizes LSI's traditional B3 drill pattern.

Warranty

- LSI luminaires carry a 5-year limited warranty. Refer to <https://www.lsicorp.com/resources/terms-conditions-warranty/> for more information.

Listings

- Listed to UL 1598 and UL 8750.
- Meets Buy American Act requirements.
- Dark Sky compliant; with 3000K color temperature selection.
- Title 24 Compliant; see local ordinance for qualification information.
- RoHS compliant
- Suitable for wet locations.
- IP66 rated Luminaire per IEC 60598-1.
- 3G rated for ANSI C136.31 high vibration applications are qualified.
- IK08 rated luminaire per IEC 66262 mechanical impact code
- DesignLights Consortium® (DLC) qualified product. Not all versions of this product may be DLC qualified. Please check the DLC Qualified Products List at www.designlights.org/QPL to confirm which versions are qualified.



LSI Industries Inc. 10000 Alliance Rd. Cincinnati, OH 45242 • (513) 372-3200 • www.lsicorp.com
LSI Industries Inc. All Rights Reserved. Specifications and dimensions subject to industry standard tolerances. Specifications subject to change without notice.

Page 1/10 Rev. 07/24/24
SPEC.1046.B.1122

P&Z

Prepared By: CBMC Lighting Solutions | <https://cbmcinc.com/>

Pete Miller | pmiller@cbmcinc.com

PZ23-12000009
January 14, 2025
03/05/2025



Job Name : Florida Indoor Tennis

Manufacturer : LSI LIGHTING SOLUTIONS PLUS

Model Number : MRS-LED-21L-SIL-FT-UNV-DIM-40-70CRI-IMSBTL1-BLK-BKS-XBO-WM-BL
K

Type :

W3

Mirada Small Area Light (MRS)

Type: _____

Have questions? Call us at (800) 436-7800

ORDERING GUIDE

[Back to Quick Links](#)

TYPICAL ORDER EXAMPLE: MRS LED 18L SIL FT UNV DIM 40 70CRI ALBCS1 BLK IH							
Prefix	Light Source	Lumen Package	Lens	Distribution	Orientation ²	Voltage	Driver
MRS - Mirada Small Area Light	LED	6L - 6,000 lms, 39W 9L - 9,000 lms, 63W 12L - 12,000 lms, 86W 15L - 15,000 lms, 111W 18L - 18,000 lms, 135W 21L - 21,000 lms, 165W 24L - 24,000 lms, 196W 30L - 30,000 lms, 209W ⁶ Custom Lumen Packages ¹	SIL - Silicone	2 - Type 2 3 - Type 3 4 - Type 4 5W - Type 5 Wide FT - Forward Throw LC - Left Corner RC - Right Corner	(blank) - standard L - Optics rotated left 90° R - Optics rotated right 90°	UNV - Universal Voltage (120-277V) HV - High Voltage (347-480V)	DIM - 0-10V Dimming (0-10%)
Color Temp	Color Rendering	Controls (Choose One)				Finish	Options
50 - 5,000 CCT 40 - 4,000 CCT 30 - 3,000 CCT	70CRI - 70 CRI	(Blank) - None Wireless Controls System ALSC - AirLink Synapse Control System ALSCS2 - AirLink Synapse Control System with 12-20' MH Motion Sensor ⁸ ALSCS4 - AirLink Synapse Control System with 20-40' MH Motion Sensor ⁸ ALBMR1LR - AirLink Blue Long Range Wireless Motion & Photo Sensor Controller (8-15' MH) ^{4,8} ALBMR2LR - AirLink Blue Long Range Wireless Motion & Photo Sensor Controller (16-40' MH) ^{4,8} Stand-Alone Controls EXT - 0-10V Dimming leads extended to housing exterior CR7P - 7 Pin Control Receptacle ANSI C136.41 ³ IMSBTL1 - Integral Bluetooth [®] Motion and Photocell Sensor (8-24' MH) ^{4,8} IMSBTL2 - Integral Bluetooth [®] Motion and Photocell Sensor (25-40' MH) ^{4,8}				BLK - Black BRZ - Dark Bronze GMG - Gun Metal Gray GPT - Graphite MSV - Metallic Silver PLP - Platinum Plus SVG - Satin Verde Green WHT - White	(Blank) - None IH - Integral Half Louver (Moderate Spill Light Cutoff) ² IL - Integral Louver (Sharp Spill Light Cutoff) ²



Need more information?

[Click here for our glossary](#)

Have additional questions?

Call us at (800) 436-7800



Accessory Ordering Information⁵

CONTROLS ACCESSORIES	
Description	Order Number
Twist Lock Photocell (120V) for use with CR7P	122514
Twist Lock Photocell (208-277) for use with CR7P	122515
Twist Lock Photocell (347V) for use with CR7P	122516
Twist Lock Photocell (480V) for use with CR7P	1225180
AirLink 5 Pin Twist Lock Controller	661409
AirLink 7 Pin Twist Lock Controller	661410
Shorting Cap for use with CR7P	149328

FUSING OPTIONS ⁷	
Description	Order Number
Single Fusing (120V)	See Fusing Accessory Guide
Single Fusing (277V)	
Double Fusing (208V, 240V)	
Double Fusing (480V)	
Double Fusing (347V)	

EXTERNAL SHIELDING OPTIONS	
3" External Shield	See Shielding Guide
6" External Shield	

1. Custom lumen and wattage packages available, consult factory. Values are within industry standard tolerances but not DLC listed.
2. Not available on "Type 5W" distribution.
3. Control device or shorting cap must be ordered separately. See Accessory Ordering Information.
4. Motion sensors are field configurable via the LSI app that can be downloaded from your smartphone's native app store.
5. Accessories are shipped separately and field installed.
6. "CLR" denotes finish. See Finish options.
7. Fusing must be located in hand hole of pole. See [Fusing Accessory Guide](#) for compatibility.
8. ALSC, ALB, and IMSBT not available with 30L HV.



Job Name : Florida Indoor Tennis
Manufacturer : LSI LIGHTING SOLUTIONS PLUS
Model Number : MRS-LED-21L-SIL-FT-UNV-DIM-40-70CRI-IMSBTL1-BLK-BKS-XBO-WM-BL
K

Type :
W3
















Mirada Small Area Light (MRS)

Have questions? Call us at (800) 436-7800

Type: _____

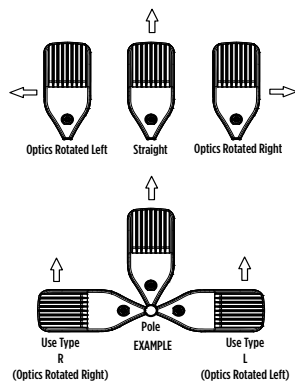
ACCESSORIES

[Back to Quick Links](#)

MOUNTING ACCESSORIES		SHIELDING, POLES & MISC. ACCESSORIES		
Side Arm	Universal Mounting Bracket Mounts to $\approx 3"$ square or round (tapered/straight) poles with (2) mounting hole spaces between 3.5" to 5" Part Number: BKA UMB CLR		Integral Louver Field Install Integral Louver provides maximum backlight control by shielding each individual row of LEDs Part Number: 763445	
	Quick Mount Plate True one person installation to existing/new construction poles with hole spaces between 2.4 to 4.6" Part Number: BKS PQM B385 XX CLR		Integral Half Louver Field Install Integral Half Louver provides great backlight control without impacting front side distribution. Part Number: 763446	
	15° Tilt Quick Mount Plate True one person installation to existing/new construction poles with hole spaces between 2.4 to 4.6" Part Number: BKS P015 B385 XX CLR		External Shield External shield blocks view of light source from any side of luminaire, additional shielding configurations available Part Number: 783607BLK (3") / 776538BLK (6")	
Tenon / Slipfitter	Adjustable Slipfitter Mounts onto a 2" (51mm) IP, 2.375" (60mm) O.D. tenon and provides 180° of tilt (max 45° above horizontal) Part Number: BKA ASF CLR		Square Poles 14 - 39" steel and aluminum poles in 4", 5" and 6" sizes for retrofit and new construction Part Number: 450/550/650	
	Square Tenon Top Mounts onto a 2" (51mm) IP, 2.375" (60mm) O.D. tenon and allows for mounting up to 4 luminaires Part Number: BKA XNM *		Round Poles 10 - 30" steel and aluminum poles in 4" and 5" sizes for retrofit and new construction Part Number: 4RP/SRP	
	Square Internal Slipfitter Mounts inside 4" or 5" square pole and allows for mounting up to 4 luminaires Part Number: BKA X_ISF * CLR		Tapered Poles 20" - 39" steel and aluminum poles for retrofit and new construction Part Number: RTP	
Wall Mount / Wood Pole	Wall Mount Bracket Mounts onto vertical wall surface (hardware/anchors not included) Part Number: BKS XBO WM CLR		Bird Spikes 10' linear bird spike (2' recommended per luminaire) silicone adhesive (covers approximately 25' linear fee of bird spike) and application tool Spike Part Number: 751631 Adhesive Part Number: 751632 Caulk Gun Part Number: 751636	
	Wood Pole Bracket Mounts onto wooden poles (6" minimum OD, hardware/anchors not included) Part Number: BKS XBO WP CLR		<p>Replace CLR with paint finish description</p> <p>Replace X with: 2"</p> <p>Replace XX with SQ for square pole or RD for round pole ($\approx 3"$ OD)</p> <p>Replace * with S (Single), D180 (Double @180°), D90 (Double @90°), T90 (Triple), Q90 (Quad)</p> <p>Replace _ with 4 (4" square pole) or 5 (5" square pole)</p>	

OPTICS ROTATION

Top View



ACCESSORIES/OPTIONS

Integral Louver (IL) and House-Side Shield (IH)

Integral louver (IL) and half louver (IH) accessory shields available for improved backlight control without sacrificing street side performance. LSI's Integral Louver (IL) and Integral House-Side Shield (IH) options deliver backlight control that significantly reduces spill light behind the poles for applications with pole locations close to adjacent properties. The design maximizes forward reflected light while reducing glare, maintaining the optical distribution selected, and most importantly eliminating light trespass. Both options rotate with the optical distribution.

Luminaire Shown with Integral Louver (IL)



Luminaire Shown with IMSBT Option



7 Pin Photoelectric Control

7-pin ANSI C136.41-2013 control receptacle option available for twist lock photocontrols or wireless control modules. Control accessories sold separately. Dimming leads from the receptacle will be connected to the driver dimming leads (Consult factory for alternate wiring).

Luminaire Shown with CR7P





Job Name : Florida Indoor Tennis

Manufacturer : LSI LIGHTING SOLUTIONS PLUS

Model Number : MRS-LED-21L-SIL-FT-UNV-DIM-40-70CRI-IMSBTL1-BLK-BKS-XBO-WM-BL
K

Type :
W3

Mirada Small Area Light (MRS)

Type: _____

Have questions? Call us at (800) 436-7800

PERFORMANCE

[Back to Quick Links](#)

DELIVERED LUMENS*												
Lumen Package	Distribution	CRI	3000K CCT			4000K CCT			5000K CCT			Wattage
			Delivered Lumens	Efficacy	BUG Rating	Delivered Lumens	Efficacy	BUG Rating	Delivered Lumens	Efficacy	BUG Rating	
6L	2	70	5918	149	B2-U0-G1	6136	155	B2-U0-G1	6122	155	B2-U0-G1	39
	3		6016	152	B1-U0-G2	6238	158	B1-U0-G2	6224	157	B1-U0-G2	
	4		5967	153	B1-U0-G2	6333	162	B1-U0-G3	6136	157	B1-U0-G2	
	5W		5690	144	B3-U0-G1	5899	149	B3-U0-G1	5886	1479	B3-U0-G1	
	FT		5822	147	B1-U0-G1	6037	152	B1-U0-G1	6023	152	B1-U0-G1	
	LC		6003	154	B1-U0-G2	6371	163	B1-U0-G2	6173	158	B1-U0-G2	
	RC		5964	153	B1-U0-G2	6329	162	B1-U0-G2	6132	157	B1-U0-G2	
9L	2	70	9091	145	B2-U0-G2	9484	152	B2-U0-G2	9462	151	B2-U0-G2	63
	3		9241	148	B2-U0-G2	9641	154	B2-U0-G2	9619	154	B2-U0-G2	
	4		9214	146	B2-U0-G3	9778	155	B2-U0-G3	9474	150	B2-U0-G3	
	5W		8740	140	B3-U0-G2	9118	146	B3-U0-G2	9097	144	B3-U0-G2	
	FT		8943	143	B2-U0-G2	9330	149	B2-U0-G2	9308	149	B2-U0-G2	
	LC		9269	147	B2-U0-G3	9837	156	B2-U0-G3	9531	151	B2-U0-G3	
	RC		9208	146	B2-U0-G2	9772	155	B2-U0-G3	9468	150	B2-U0-G3	
12L	2	70	12132	141	B3-U0-G2	12685	148	B3-U0-G2	12514	146	B3-U0-G2	86
	3		12333	143	B2-U0-G2	12894	150	B2-U0-G2	12721	148	B2-U0-G2	
	4		12277	143	B2-U0-G3	13029	152	B2-U0-G3	12623	147	B2-U0-G3	
	5W		11664	136	B4-U0-G2	12195	142	B4-U0-G2	12031	140	B4-U0-G2	
	FT		11935	139	B2-U0-G2	12479	145	B2-U0-G2	12311	143	B2-U0-G2	
	LC		12351	144	B2-U0-G3	13108	152	B2-U0-G3	12700	148	B2-U0-G3	
	RC		12271	143	B2-U0-G3	13022	151	B2-U0-G3	12617	147	B2-U0-G3	
15L	2	70	14220	128	B3-U0-G2	15167	137	B3-U0-G2	14488	131	B3-U0-G2	111
	3		14938	135	B2-U0-G2	15933	144	B2-U0-G2	15219	137	B2-U0-G2	
	4		14792	133	B2-U0-G4	15698	141	B2-U0-G4	15209	137	B2-U0-G4	
	5W		14304	129	B4-U0-G2	15257	137	B4-U0-G2	14574	131	B4-U0-G2	
	FT		14342	129	B2-U0-G2	15297	138	B2-U0-G2	14612	132	B2-U0-G2	
	LC		14881	134	B2-U0-G3	15793	142	B2-U0-G3	15301	138	B2-U0-G3	
	RC		14784	133	B2-U0-G3	15689	141	B2-U0-G3	15201	137	B2-U0-G3	
18L	2	70	16438	122	B3-U0-G2	17532	130	B3-U0-G3	16747	124	B3-U0-G2	135
	3		17267	128	B3-U0-G3	18417	137	B3-U0-G3	17592	131	B3-U0-G3	
	4		17101	127	B3-U-G4	18149	134	B3-U-G4	17584	130	B3-U-G4	
	5W		16535	123	B4-U0-G2	17636	133	B5-U0-G2	16846	125	B4-U0-G2	
	FT		16578	123	B3-U0-G2	17682	131	B3-U0-G2	16890	125	B3-U0-G2	
	LC		17204	127	B3-U0-G3	18258	135	B3-U0-G3	17689	131	B3-U0-G3	
	RC		17091	127	B2-U0-G3	18138	134	B2-U0-G3	17574	130	B2-U0-G3	
21L	2	70	19488	118	B3-U0-G3	20786	126	B3-U0-G3	19885	120	B3-U0-G3	165
	3		20472	124	B3-U0-G3	21835	132	B3-U0-G3	20857	126	B3-U0-G3	
	4		20279	123	B3-U0-G4	21521	130	B3-U0-G5	20851	126	B3-U0-G5	
	5W		19604	119	B5-U0-G3	20909	126	B5-U0-G3	19973	121	B5-U0-G3	
	FT		19655	119	B3-U0-G3	20964	127	B3-U0-G3	20025	121	B3-U0-G3	
	LC		20401	124	B3-U0-G4	21651	131	B3-U0-G4	20977	127	B3-U0-G4	
	RC		20268	123	B3-U0-G3	21509	130	B3-U0-G4	20840	126	B3-U0-G3	

*LEDs are frequently updated therefore values are nominal.

LSI Industries Inc. 10000 Alliance Rd. Cincinnati, OH 45242 • (513) 372-3200 • www.isicorp.com
LSI Industries Inc. All Rights Reserved. Specifications and dimensions subject to industry standard tolerances. Specifications subject to change without notice.

Page 4/10 Rev. 07/24/24
SPEC.1046.B.1122

P&Z

Prepared By: CBMC Lighting Solutions | <https://cbmcinc.com/>

Pete Miller | pmiller@cbmcinc.com

PZ23-12000009

January 14, 2025

03/05/2025



Job Name : Florida Indoor Tennis
Manufacturer : LSI LIGHTING SOLUTIONS PLUS
Model Number : MRS-LED-21L-SIL-FT-UNV-DIM-40-70CRI-IMSBTL1-BLK-BKS-XBO-WM-BL
K

Type :
W3

Mirada Small Area Light (MRS)

Type: _____

Have questions? Call us at (800) 436-7800

PERFORMANCE

[Back to Quick Links](#)

DELIVERED LUMENS*												
Lumen Package	Distribution	CRI	3000K CCT			4000K CCT			5000K CCT			Wattage
			Delivered Lumens	Efficacy	BUG Rating	Delivered Lumens	Efficacy	BUG Rating	Delivered Lumens	Efficacy	BUG Rating	
24L	2	70	21976	112	B3-U0-G3	23439	120	B3-U0-G3	22390	114	B3-U0-G3	196
	3		23085	118	B3-U0-G3	24622	126	B3-U0-G3	23519	120	B3-U0-G3	
	4		23190	117	B3-U0-G5	24758	124	B3-U0-G5	23888	120	B3-U0-G5	
	5W		22105	113	B5-U0-G3	23578	120	B5-U0-G3	22522	115	B5-U0-G3	
	FT		22164	113	B3-U0-G3	23640	121	B3-U0-G3	22581	115	B3-U0-G3	
	LC		23330	117	B3-U0-G4	24907	125	B3-U0-G4	24032	121	B3-U0-G4	
	RC		23117	117	B3-U0-G4	24744	124	B3-U0-G4	23874	120	B3-U0-G4	
30L	2	70	30078	144	B4-U0-G3	29485	143	B4-U0-G4	30697	147	B4-U0-G3	209
	3		31711	154	B3-U0-G3	31086	151	B3-U0-G3	32364	157	B3-U0-G3	
	4		30459	148	B4-U0-G5	29858	145	B4-U0-G5	31085	151	B4-U0-G5	
	5W		30588	149	B5-U0-G3	29985	146	B5-U0-G3	31218	152	B5-U0-G3	
	FT		31585	153	B3-U0-G4	30962	150	B3-U0-G4	32235	156	B4-U0-G4	
	LC		32303	155	B3-U0-G5	31666	152	B3-U0-G5	32968	158	B3-U0-G5	
	RC		31943	153	B3-U0-G4	31313	150	B3-U0-G4	32600	156	B3-U0-G5	

*LEDs are frequently updated therefore values are nominal.

ELECTRICAL DATA (AMPS)*						
Lumens	120V	208V	240V	277V	347V	480V
6L	0.34	0.20	0.17	0.15	0.12	0.09
9L	0.52	0.30	0.26	0.23	0.18	0.13
12L	0.72	0.41	0.36	0.31	0.25	0.18
15L	0.93	0.53	0.46	0.40	0.32	0.23
18L	1.12	0.65	0.56	0.49	0.39	0.28
21L	1.38	0.80	0.69	0.60	0.48	0.34
24L	1.63	0.94	0.82	0.71	0.56	0.41
30L	1.74	1.00	0.87	0.75	0.60	0.43

*Electrical data at 25°C (77°F). Actual wattage may differ by +/-10%

RECOMMENDED LUMEN MAINTENANCE ¹					
Ambient Temp	Lumen Multiplier				
	0 hrs. ²	25K hrs. ²	50K hrs. ²	75K hrs. ³	100K hrs. ³
0 C - 25 C	100%	95%	89%	84%	79%
40 C	100%	94%	87%	80%	74%

- Lumen maintenance values at 25°C are calculated per TM-21 based on LM-80 data and in-situ luminaire testing.
- In accordance with IESNA TM-21-11, Projected Values represent interpolated value based on time durations that are within six times (6X) the IESNA LM-80-08 total test duration (in hours) for the device under testing ((DUT) i.e. the packaged LED chip).
- In accordance with IESNA TM-21-11, Calculated Values represent time durations that exceed six times NA LM-80-08 total test duration (in hours) for the device under testing ((DUT) i.e. the packaged LED chip).



Job Name : Florida Indoor Tennis
Manufacturer : LSI LIGHTING SOLUTIONS PLUS
Model Number : MRS-LED-21L-SIL-FT-UNV-DIM-40-70CRI-IMSBTL1-BLK-BKS-XBO-WM-BL
K

Type :
W3

Mirada Small Area Light (MRS)

Have questions? Call us at (800) 436-7800

Type: _____

PHOTOMETRICS (CONT)

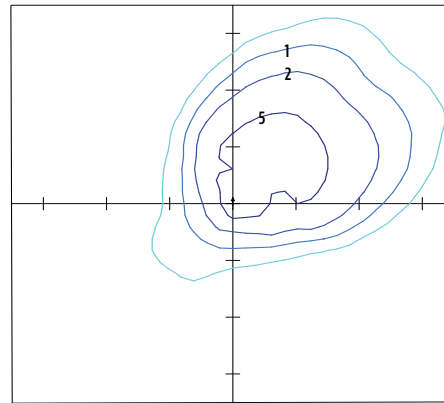
[Back to Quick Links](#)

MRM-LED-30L-SIL-5W-40-70CRI

Luminaire Data	
Right Corner Distribution	
Description	4000 Kelvin, 70 CRI
Delivered Lumens	18,138
Watts	135
Efficacy	134
IES Type	N/A
BUG Rating	B3-U0-G3

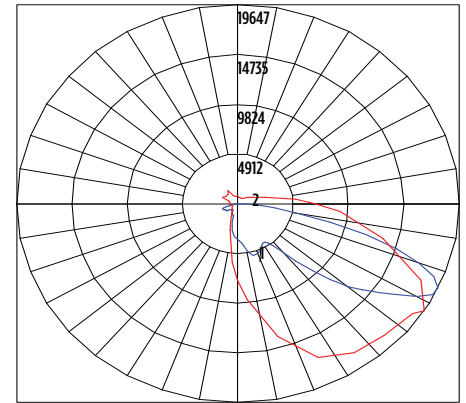
Zonal Lumen Summary		
Zone	Lumens	% Luminaire
Low (0-30)°	2317	13%
Medium (30-60)°	8066	44%
High (60-80)°	7214	40%
Very High (80-90)°	541	3%
Uplight (90-180)°	0	0%
Total Flux	18138	100%

ISO Footcandle



20' Mounting Height / 20' Grid Spacing
5 FC 2 FC 1 FC 0.5 FC

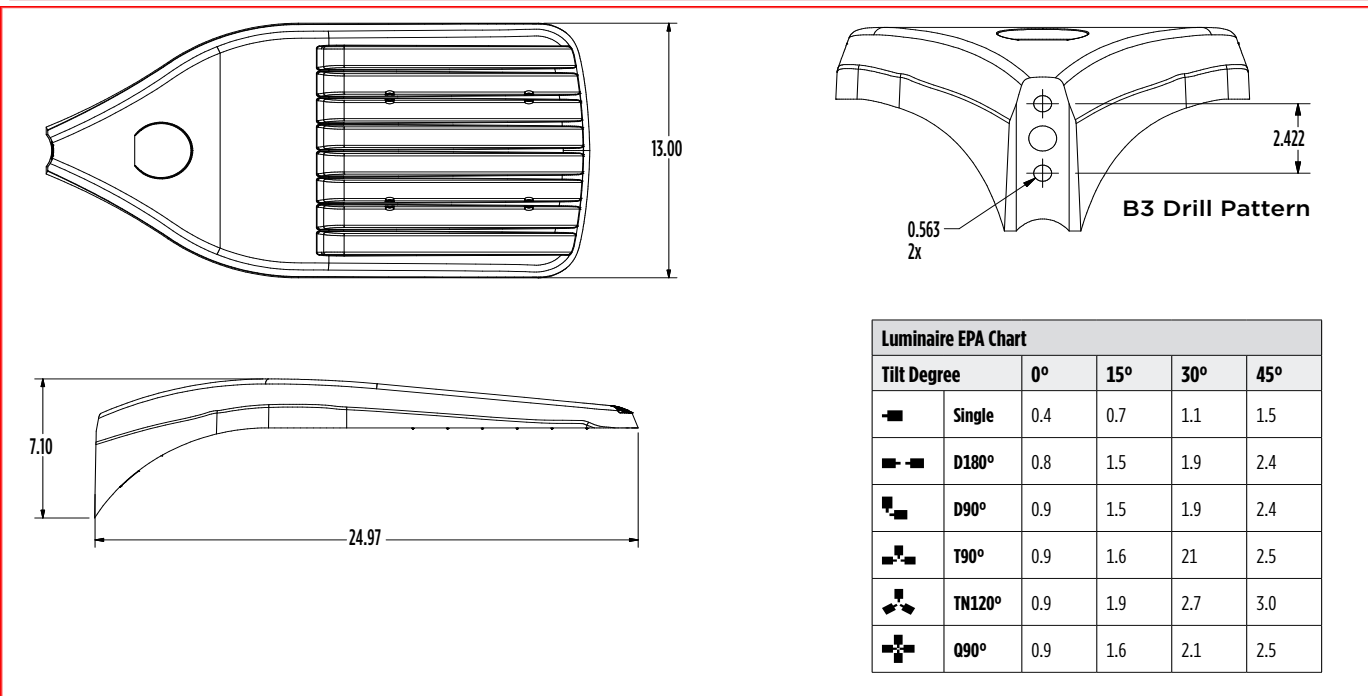
Polar Curve



Vertical Plane Horizontal Cone

PRODUCT DIMENSIONS

[Back to Quick Links](#)



LSI Industries Inc. 10000 Alliance Rd. Cincinnati, OH 45242 • (513) 372-3200 • www.lsicorp.com
LSI Industries Inc. All Rights Reserved. Specifications and dimensions subject to industry standard tolerances. Specifications subject to change without notice.

Page 9/10 Rev. 07/24/24
SPEC.1046.B.1122

P&Z

Prepared By: CBMC Lighting Solutions | <https://cbmcinc.com/>

Pete Miller | pmiller@cbmcinc.com

PZ23-1200009
January 14, 2025
03/05/2025